

# GIANT-HT LOW TENSION EVEN-FLOW DYEING MACHINE

巨染高温高压低张力  
匀流染色机



GIANT is developed based on WINBOX, it is specially designed for heavy and wide fabric (terry towel, wide home-tex, chenille carpet, blanket, etc), applied to pre-treatment, dyeing, after treatment of heavy fabric in rope form. The capacity is 400-500kgs per tube.

Thanks similar circulation system is running for double capacity then WINBOX, thus, lower liquor ratio is achieved by this innovation design.

- 1- Extra low liquor ratio, 1:3-4.5 for normal active dyeing, water consumption is between 24-45L per kg fabric (from light to dark color).
- 2- "Even-flow" system makes the dyeing liquid circulating in horizontal manner during processing, which increased 300% circulation ratio.
- 3- "Even-flow" dosing system to ensure consistence of dyeing liquor when contact fabric through the extra large soft nozzle to avoid uneven dyeing, and reduce weight lost in loose fabric.
- 4- Minimized lifting height design ensures minimum fabric tension during processing for size stable of treated fabric.
- 5- Typical processing time can be 4.5-5 hours.

巨染高温高压染色机是在“匀宝”基础上研发的新款液流染色机，是一款“小块头、大容量”的染色设备，专为厚重织物（如：毛巾、特阔家纺、雪尼尔地毯、毛毯等）设计，每管载量高达400公斤。染液循环系统基于“匀宝”的匀流系统改进而成；由于每管载量几乎增加一倍，因而浴比更低，单位能耗更为节省！

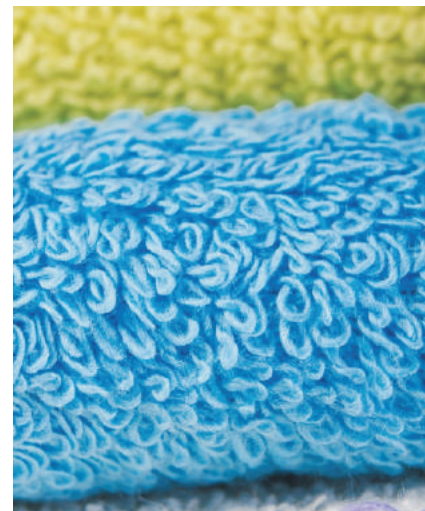
- 1- 超低浴比，活性染色的浴比为1:3-4.5；每公斤布总耗水量为25-45L（浅色至深色）。
- 2- 特殊的匀流系统令染液在染色过程中，垂直循环的同时横向循环，从而增加三倍的循环效率。
- 3- 匀流加料系统，特殊设计的大流量喷嘴保证了织物与均匀染液和缓接触，避免染色不均以及减少对松散型织物的纤维损伤。
- 4- 织物提升高度的最小化设计，保证了处染过程中织物张力最小化，从而保证织物尺寸稳定性。
- 5- 总工艺时间可达4.5-5小时。

## TECHNICAL DATA

Liquor ratio: 1:3-5  
Max. lifting speed: 500M/min.  
Designer temperature: 140°C  
Designed pressure: 3.5Mbar  
Heating gradient: 5°C/min. from 25°C-100°C  
Cooling gradient: 2°C/min. from 100°C-85°C

## 技术参数

浴比：1:3-5  
最高提升速度：500M/min  
最高设计温度：140°C  
压力：3.5Mbar  
升温速率：25°C-100°C，平均5°C每分钟  
降温速率：100°C-85°C，平均2°C每分钟



# GIANT-HT

巨染高温高压低张力匀流染色机

GIANT H.T. LOW TENSION EVENFLOW DYEING MACHINE

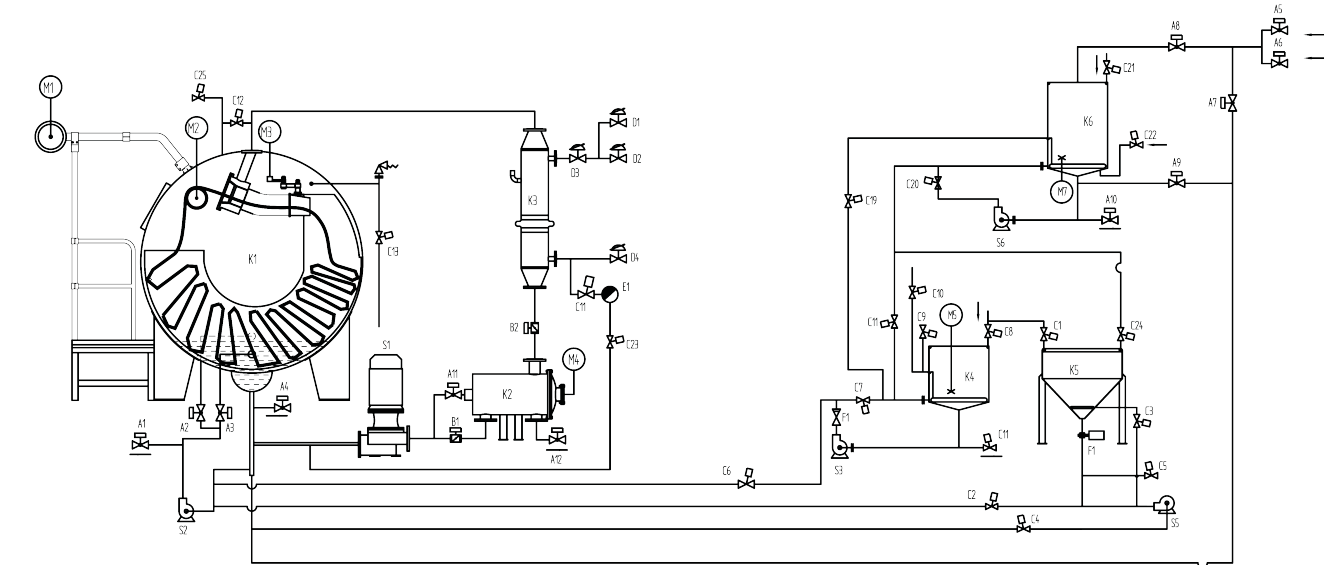


www.texlinkmachine.com

B-04



## SCHEMATIC DIAGRAM 流程图



- K1. Main Kier 主缸
- K2. Filter 过滤器
- K3. Heat Exchanger 散热器
- K4. Dosing Tank 颜料桶

- K5. Salt Dosing Tank 加盐桶
- K6. Storage Tank 预备缸
- S1. Main Pump 主泵
- S2. Circulation Pump 循环泵

- S3. Dosing Pump 加料泵
- S5. Salt Dosing Pump 加盐泵
- S6. STK Dosing Pump 预备缸加盐泵

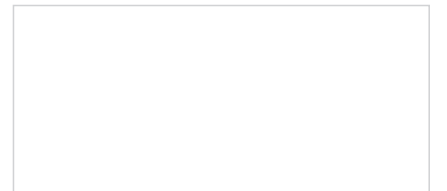
## CHOOSE YOUR MODEL 技术选型

MODEL 机型	CAPACITY(KG) 载量	MAIN PUMP POWER (KW) 主泵功率	INSTALLED POWER (KW) 总功率	DIMENSIONS(MM) 外形尺寸		
				Length 长	Width 宽	Height 高
GIANT-HT-1T400	400	7.5	18.8	3800	5100	3100
GIANT-HT-2T400	800	15	29	4900	5100	3100
GIANT-HT-3T400	1200	18.5	36	6500	5300	3100
GIANT-HT-4T400	1600	22	41.3	8500	5400	3100
GIANT-HT-6T400	2400	18.5*2	63.5	11500	5800	3100

TEXLINK ENGINEERING CO., LTD.  
惠州泰纶纺织机械有限公司

中国-广东省惠州市博罗县园洲镇禾山工业区  
Texlink Industrial Park ,HeShan Village ,YuanZhou Town ,  
BoLuo County ,HuiZhou 516123,P.R.China  
Tel:86-752-6650 928 Fax:+86-752-6650 298  
E-mail:sales@texlinkmachine.com

DISTRIBUTOR.  
经销商







### 特殊布种 SPECIAL FABRIC

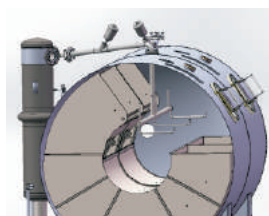
可开幅式运行，易卷边布亦可使用。可行双股入布

Thanks to special nozzle design, open width fabric and double ropes can be also applied smoothly.

### 缸内清洗 TANK WASHING

缸内具清洗机构，可自动清洗缸体，换色操作也不复杂

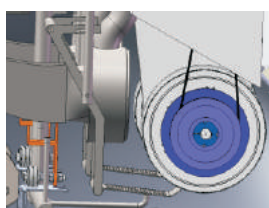
Automatic Tank washing system to ensure a clean machine for even color change.



### 防缠车自动解缠 ANTI-TANGLE

具自动侦测功能，感应后提布轮以变频控制反转解缠，缠车发生率极低

Automatic Tangle release is carried by inverter FOR/REV.



### 棉絮过滤器 AUTO FILTER

全自动棉絮过滤清除系统，不需人工操作

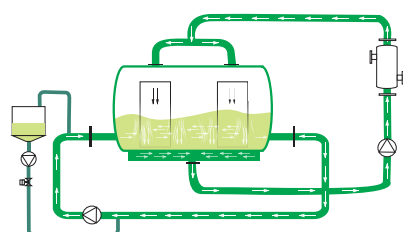
Auto filtering system.



### 染液横向循环 CIRCULATION

Dual Circulation design, dyeing liquid circulation efficiency increased 300%.

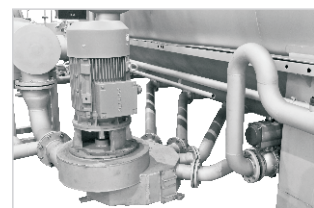
纵向及横向双循环系统设计，染液均匀度提高300%



### 主泵循环 MAIN PUMP

多吸入口染色主泵，从缸底不同位置吸水并被主泵搅拌均匀再导入喷嘴，大幅提升匀染率

Multi inlet dyeing pump can also greatly increase uniformity of dyeing liquid.



### 喷嘴设计 NOZZLE DESIGN

根据布种可更换180MM或135MM喷嘴，几乎适应所有布重范围  
Interchangeable nozzle between 180/135mm, almost suitable for all kinds of fabric in the market.



### 展布设计 FABRIC TRANS DUCT

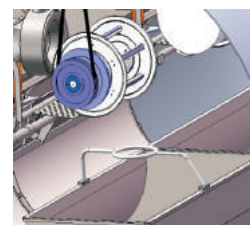
喷嘴与展布器(输送管)一体，输送管前圆后方全新设计，布易展开

Built in Nozzle + Fabric Trans Duct, Round to Rectangular design for better extending of fabric.



### 提布高度 LIFTING HEIGHT

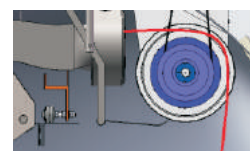
提布轮设计在机器内部，布槽上方，具有极少的提升高度，从而将织物张力减至最小  
Builtin Lifter Reel Design, Minimized Lifting height to the fabric thus lowest tension obtained for processing.



### 经过提布轮布的方向改变角度 LIFTING ANGLE

转90度/布张力小，摩擦小

Fabric Lifting Angle upto 90°, fabric runs extra low tension and friction.

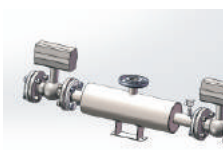


# GIANT-HT

### 高温排放温度 HT DRAINING

智能型染缸设计，染缸压力可依温度自动调整，因此，高温排放于90°C以下即可开始

Hot draining is allowed to be carried from 90°C by a HT draining system.



### 同步降温水洗 CCR

采用CCR 降温同步水洗，降温水用于水洗，并支持高温排放

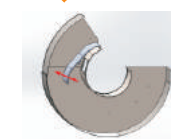
CCR allows rinsing by the cooling water, also Hot draining system is built in.



### 摆布后储布空间调整 ADJUSTABLE CHAMBER

箱型储布空间，可依布克重，前后可调整储布空间，布的排列顺序，先进先出

Fabric Chamber can be adjusted according weight of fabric to ensure fabric running smoothly.



### 副缸数量及功能 DOSING TANK

2副缸设计，其中1桶具计量功能，另一桶为粉体（如芒硝等）之注入功能

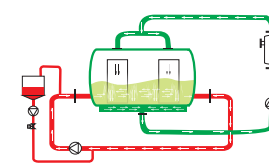
Wet and Dry chemical dosing tanks are considered for most convenient operation.



### 染料及助剂计量 DOSING

智慧型计，带缸底横向循环系统，染料及助剂计量注入后先经过横向循环系统充分搅拌再导入喷嘴

Dosing to be carried by the Horizontal circulation ensures even liquid to be transferred to the fabric anyway.



### 染机设计 DESIGN

复杂问题简单解决，TEXLINK在解决匀染和节能减排方向不断研发

TEXLINK design to Reduce Water, Electricity, Steam consumption for proper dyeing solution.

Continuously contribute "VALUE CREATED" service and products for textiles industry.



### 染机人机界面控制器 CONTROLLER

与德国SEDO TREE POINT公司为长期伙伴，合作经验丰富。

亦可搭配其他控制器如SETEX

Standard with Sedo Tree Point controller, also Setex is available for optional.



### 染色控制 DYEING CONTROL

染程洗水即时监控最佳化，由感应器监测缸内液体波长确定是否已清洗干净  
optical turbidity sensing system for rinsing contro.



### 自动圈时控制 AUTO CIRCLE TIME

自动圈时控制，布槽载量，织物长度不同情况下，仍然保证织物通过喷嘴的次数一致，达至匀染

Auto circle time control, speed of each nozzle can be adjusted according to length of fabric, to ensure even dyeing.



### 染色再现性 ONE TIME RIGHT DYEING

全自动染色控制外加精准水位，温度控制，极其优化的整机设计，保证染色一次中色率高，染色再现性高

High Performance machine combined with accuracy sensing to level and temp. both OTRD and Repeat Dyeing ratio are on higher side.

