

MWP-HT
 LOW TENSION
 EVEN-FLOW
 FABRIC SAMPLING
 DYEING MACHINE
 迷你匀宝匀流
 低张力织物
 样品染色机



TECHNICAL DATA

Liquor Ratio: 1:4-6
 Max. speed: 150M/Min
 Designed Temp: 140°C
 Designed Pressure: 3.5Mbar
 Heating Rate: 25°C-98°C, average 5°C / min
 Cooling Rate: 130°C-85°C, average 2.5°C / min

技术参数

浴比：1:4-6
 提升速度：150米/分钟（最高）
 设计温度：140°C
 设计压力：3.5Mbar
 升温速率：25°C-98°C，平均5°C每分钟
 降温速率：130°C-85°C，平均2.5°C每分钟



MWP suitable for cotton, cotton/man-made fiber blends, man-made fibers pre-treatment, dyeing and after-treatment of fabric in rope form, either tubular or open width, both in Atmospheric and High temperature according to process.
 Type of Fabrics: Woven and Knitted
 Capacity: 10kg/tube~150kg/tube for single tube machine and from 20kgs/batch~300kgs for multi tube.

迷你匀宝织物样品染色机适用于棉，涤棉，化纤织物绳状前处理，染色，后处理，无论是圆筒或开幅。并且根据染色工艺，可用于常温或高温染色。

使用织物类型：针织或梭织

容量：10-150公斤每管（单管）；20-300公斤每批次（双管）



Since low liquor ratio (below 1:4) bulk production becomes more and more popular in dyeing house, sample dyeing in the same liquor ratio is necessary to obtain the accurate recipe, MINI WINBOX had applied all advanced even-flow dyeing machine design to fulfill the Low LR(1:4) sampling requirement.

随着染厂设备更新，低浴比（小于1:4）大容量染色机被广泛使用，为保证染色工艺的准确性，同样浴比的样品染色机也显得越来越重要。迷你匀宝继承了匀宝染色机的匀流循环系统，以及其他先进设计成果，可轻松满足小浴比的打版要求。



MWP-HT

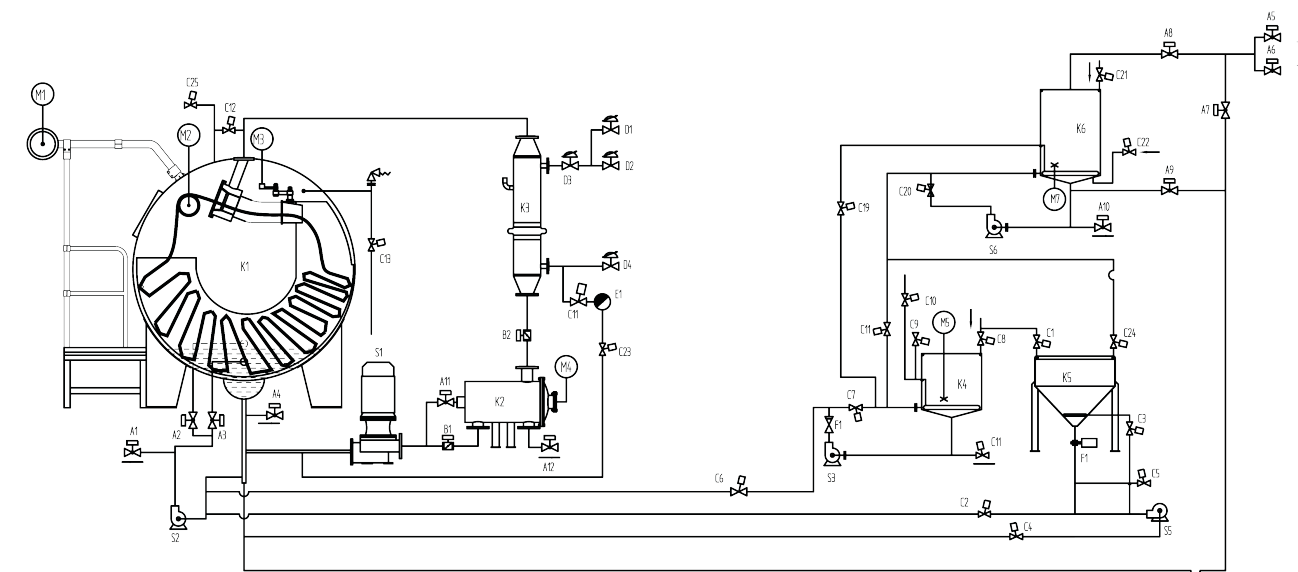
迷你匀宝匀流低张力织物样品染色机

MINI WINPLUS LOW TENSION FABRIC SAMPLE DYEING MACHINE



www.texlinkmachine.com

SCHEMATIC DIAGRAM 流程图



- K1. Main Kier 主缸
- K2. Filter 过滤器
- K3. Heat Exchanger 散热器
- K4. Dosing Tank 颜料桶
- K5. Salt Dosing Tank 加盐桶
- K6. Storage Tank 预备缸
- S1. Main Pump 主泵
- S2. Circulation Pump 循环泵
- S3. Dosing Pump 加料泵
- S5. Salt Dosing Pump 加盐泵
- S6. STK Dosing Pump 预备缸加盐泵

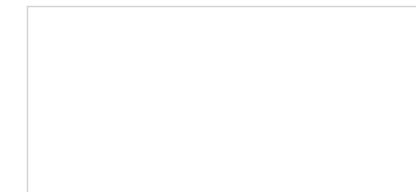
CHOOSE YOUR MODEL 技术选型

MODEL 机型	NOMINAL CAP(kgs) 载量	INSTALLED POWER (KW) 总功率	DIMENSIONS(MM) 外形尺寸		
			Length 长	Width 宽	Height 高
MWP-HT-1T010	10	5.6	1943	2777	2173
MWP-HT-1T015	15	5.6	1943	2777	2173
MWP-HT-1T025	25	7.5	2160	3097	2173
MWP-HT-1T050	50	7.7	2380	3358	2351
MWP-HT-1T100	100	9.2	2600	4100	2600
MWP-HT-1T125	120	9.2	2650	4100	2600
MWP-HT-1T150	150	11.2	2800	4300	2800
MWP-HT-1T100	200	18.5	5200	4100	2600
MWP-HT-1T125	250	18.5	5300	4100	2600
MWP-HT-1T150	300	22	5600	4300	2800

TEXLINK ENGINEERING CO., LTD.
 惠州泰纶纺织机械有限公司

中国-广东省惠州市博罗县洲镇禾山工业区
 Texlink Industrial Park ,HeShan Village ,YuanZhou Town ,
 BoLuo County ,HuiZhou 516123,P.R.China
 Tel:86-752-6650 928 Fax:+86-752-6650 298
 E-mail:sales@texlinkmachine.com

DISTRIBUTOR.
 经销商



B-06



特殊布种 SPECIAL FABRIC

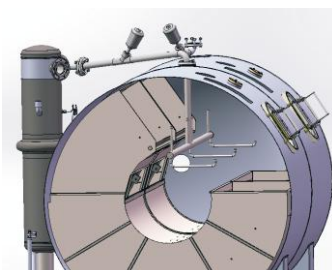
可开幅式运行，易卷边布亦可使用。可行双股入布

Thanks to special nozzle design, open width fabric and double ropes can be also applied smoothly.

缸内清洗 TANK WASHING

缸内具清洗机构，可自动喷洗缸体，换色操作也不复杂

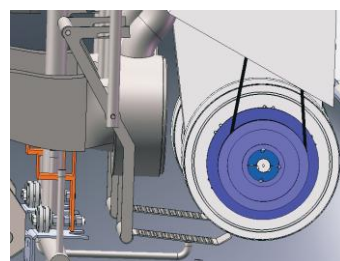
Automatic Tank washing system to ensure a clean machine for even color change.



防缠车自动解缠 ANTI-TANGLE

具自动侦测功能，感应后提布轮以变频控制反转解缠，缠车发生率极低

Automatic Tangle release is carried by inverter FOR/REV.



棉絮过滤器 AUTO FILTER

全自动棉絮过滤清除系统，不需人工操作

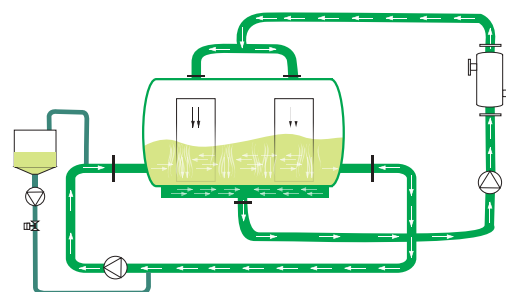
Auto filtering system.



染液横向循环 CIRCULATION

Dual Circulation design, dyeing liquid circulation efficiency increased 300%.

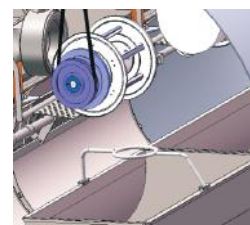
纵向及横向双循环系统设计，染液均匀度提高300%



提布高度 LIFTING HEIGHT

提布轮设计在机器内部，布槽上方，具有极少的提升高度，从而将织物张力减至最小

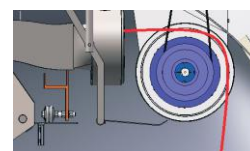
Builtin Lifter Reel Design, Minimized Lifting height to the fabric thus lowest tension obtained for processing.



经过提布轮布的方向改变角度 LIFTING ANGLE

转90度/布张力小，摩擦小

Fabric Lifting Angle upto 90°, fabric runs extra low tension and friction.



副缸数量及功能 DOSING TANK

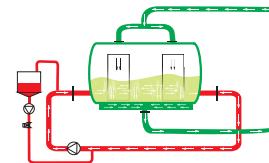
2副缸设计，其中1桶具计量功能，另一桶为粉体（如芒硝等）之注入功能
Wet and Dry chemical dosing tanks are considered for most convenient operation.



染料及助剂计量 DOSING

智慧型计，带缸底横向循环系统，染料及助剂计量注入后先经过横向循环系统充分搅拌再导入喷嘴

Dosing to be carried by the Horizontal circulation ensures even liquid to be transferred to the fabric anyway.



染机设计 DESIGN

复杂问题简单解决，TEXLINK在解决匀染和节能减排方向不断研发

TEXLINK design to Reduce Water, Electricity, Steam consumption for proper dyeing solution.

Continuously contribute "VALUE CREATED" service and products for textiles industry.



染机人机界面控制器 CONTROLLER

与德国SEDO TREE POINT公司为长期伙伴，合作经验丰富。

亦可搭配其他控制器如SETEX

Standard with Sedo Tree Point controller, also Setex

is available for optional.



染色控制 DYEING CONTROL

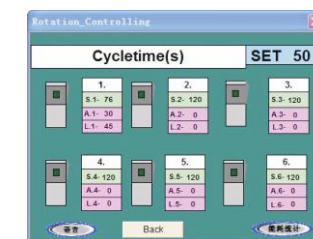
染程洗水即时监控最佳化，由感应器监测缸内液体波长确定是否已清洗干净
optical turbidity sensing system for rinsing contro.



自动圈时控制 AUTO CIRCLE TIME

自动圈时控制，布槽载量，织物长度不同情况下，仍然保证织物通过喷嘴的次数一致，达至匀染

Auto circle time control, speed of each nozzle can be adjusted according to length of fabric, to ensure even dyeing.



染色再现性 ONE TIME RIGHT DYEING

全自动染色控制外加精准水位，温度控制，极其优化的整机设计，保证染色一次中色率高，染色再现性高

High Performance machine combined with accuracy sensing to level and temp. both OTRD and Repeat Dyeing ratio are on higher side.



MWP-HT

