

WP-HT  
LOW TENSION  
EVEN-FLOW  
DYEING MACHINE  
匀宝高温高压低张力  
匀流染色机



### TECHNICAL DATA

Liquor Ratio: 1:3-5  
Max.Lifting speed: 500M/Min  
Designed Temperature: 140°C  
Designed Pressure: 3.5Mbar  
Heating Gradient: 5°C/Min.form 25°C-100°C ;  
2.5°C/Min.form 100°C-130°C  
Cooling Gradient: 3°C/Min.form 130°C-100°C ;  
2°C/Min.form 100°C-85°C

### 技术参数

浴比：1:3-5  
最高提升速度：500M/Min  
最高设计温度：140°C  
压力：3.5Mbar  
升温速率：25°C-100°C，平均5°C每分钟；  
100°C-130°C，平均2.5°C每分钟  
降温速率：130°C-100°C，平均3°C每分钟；  
100°C-85°C，平均2°C每分钟

### Product features 产品优势

WINBOX is an innovative water flow dyeing machine suitable for pre-treatment, dyeing, after treatment of fabric in rope form.

- 1-Extra low liquor ratio, 1:3-4.5 for normal active dyeing, water consumption is Between 25-45L per kg fabric ( from Light to Dark Color )
- 2-Even-flow system makes the dyeing liquid circulating in horizontal manner during processing, which increased 300% circulation ratio.
- 3-Even-flow dosing system to ensure consistence of dyeing liquor when contact fabric through the pressure modulation nozzle to avoid un-even dyeing.
- 4-Minimized Lifting Height design ensures minimum fabric tension during processing,it is most important for the size stable of sensitive fabric like Lycra, Spandex, Viscose Modal after dyeing.
- 5-Typical Processing time can be 4.5-5hours.

匀宝染色机是新型液流染色机，几乎适用于所有布种，具以下特点：

- 1-超低浴比，活性染色的浴比为：1:3-4.5；每公斤布总耗水量为25-45L（浅色至深色）
- 2-特殊的匀流系统令染液在染色过程中，垂直循环的同时横向循环，从而增加三倍的循环效率。
- 3-匀流加料系统和压力可调的喷嘴保证了织物与均匀染液和缓接触，相对一些敏感织物如人造棉，黏胶，莫代尔以及竹纤维，染色的一次成功率得以保证。
- 4-织物提升高度的最小化设计，保证了处染过程中织物张力最小化，从而保证弹力织物如拉架，氨纶等织物的尺寸稳定性。
- 5-总工艺时间可达4.5-5小时。

Because of saving compare with conventional Dyeing machine:

- 1- Chemicals Auxiliaries saving 40-50%;
- 2- Dyes saving 5-10%;
- 3- Sewage reducing 60%;
- 4- Water,Steam saving 50%;
- 5- Electricity Power saving 50%.

匀宝染色机有节约能耗的特点。

与传统的溢流染色机相比：

- 1- 化学助剂可节约40-50%;
- 2- 染料可节约5-10% ;
- 3- 排污可减少60% ;
- 4- 水气可节约50%;
- 5- 电可节约50%。



# WP-HT

## 匀宝高温高压低张力匀流染色机

### WINPLUS H.T. LOW TENSION EVENFLOW DYEING MACHINE

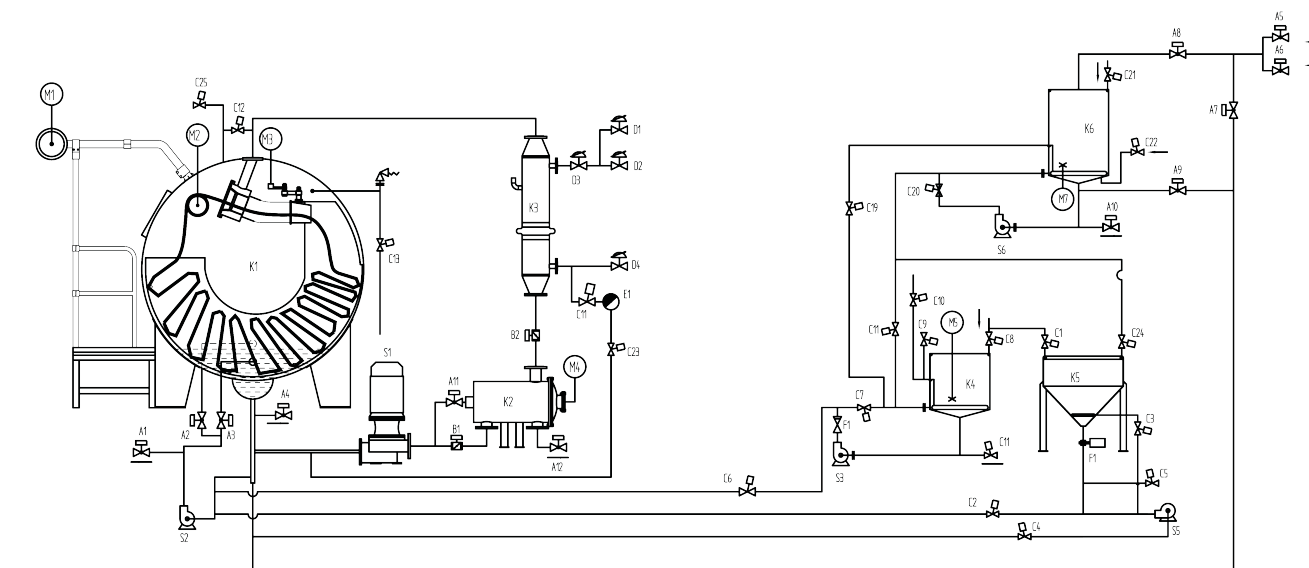


www.texlinkmachine.com

B-07



### SCHEMATIC DIAGRAM 流程图



- K1. Main Kier 主缸
- K2. Filter 过滤器
- K3. Heat Exchanger 散热器
- K4. Dosing Tank 颜料桶

- K5. Salt Dosing Tank 加盐桶
- K6. Storage Tank 预备缸
- S1. Main Pump 主泵
- S2. Circulation Pump 循环泵

- S3. Dosing Pump 加料泵
- S5. Salt Dosing Pump 加盐泵
- S6. STK Dosing Pump 预备缸加盐泵

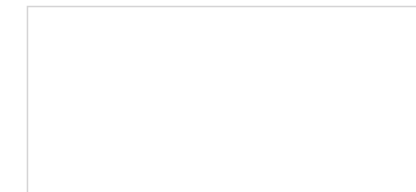
### CHOOSE YOUR MODEL 技术选型

MODEL 机型	CAPACITY(KG) 载量	MAIN PUMP POWER (KW) 主泵功率	INSTALLED POWER (KW) 总功率	DIMENSIONS(MM) 外形尺寸		
				Length 长	Width 宽	Height 高
WP-HT-1T200	200	7.5	18.8	3300	5100	3100
WP-HT-1T250	250	7.5	18.8	3500	5100	3100
WP-HT-2T250	500	15	29	4350	5300	3100
WP-HT-3T250	750	18.5	36	5600	5400	3100
WP-HT-4T250	1000	22	41.3	7500	5800	3100
WP-HT-6T250	1500	18.5*2	63.5	10000	5800	3100

TEXLINK ENGINEERING CO., LTD.  
惠州泰纶纺织机械有限公司

中国-广东省惠州市博罗县洲镇禾山工业区  
Texlink Industrial Park ,HeShan Village ,YuanZhou Town ,  
BoLuo County ,HuiZhou 516123,P.R.China  
Tel:86-752-6650 928 Fax:+86-752-6650 298  
E-mail:sales@texlinkmachine.com

DISTRIBUTOR.  
经销商

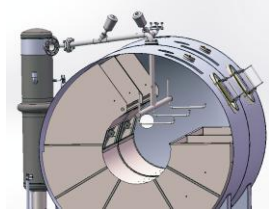


### 特殊布种 SPECIAL FABRIC

可开幅式运行，易卷边布亦可使用。可行双股入布  
Thanks to special nozzle design, open width fabric and double ropes can be also applied smoothly.

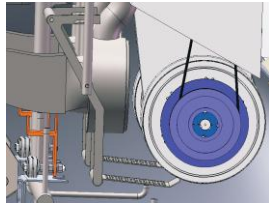
### 缸内清洗 TANK WASHING

缸内具清洗机构，可自动清洗缸体，换色操作也不复杂  
Automatic Tank washing system to ensure a clean machine for even color change.



### 防缠车自动解缠 ANTI-TANGLE

具自动侦测功能，感应后提布轮以变频控制反转解缠，缠车发生率极低  
Automatic Tangle release is carried by inverter FOR/REV.



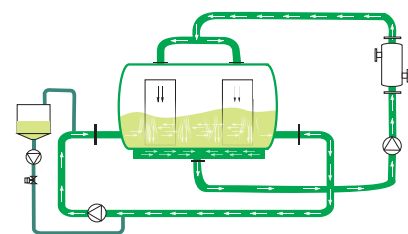
### 棉絮过滤器 AUTO FILTER

全自动棉絮过滤清除系统，不需人工操作  
Auto filtering system.



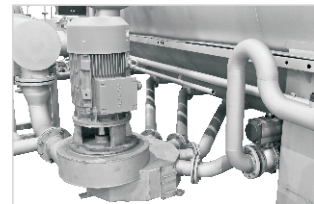
### 染液横向循环 CIRCULATION

Dual Circulation design, dyeing liquid circulation efficiency increased 300%.  
纵向及横向双循环系统设计，染液均匀度提高300%



### 主泵循环 MAIN PUMP

多吸入口染色主泵，从缸底不同位置吸水并被主泵搅拌均匀再导入喷嘴，大幅提升匀染率  
Multi inlet dyeing pump can also greatly increase uniformity of dyeing liquid.



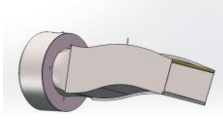
### 喷嘴设计 NOZZLE DESIGN

根据布种可更换180MM或135MM喷嘴，几乎适应所有布重范围  
Interchangeable nozzle between 180/135mm, almost suitable for all kinds of fabric in the market.



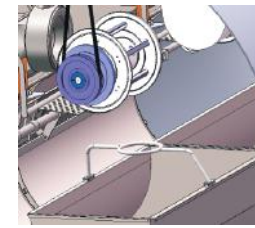
### 展布设计 FABRIC TRANS DUCT

喷嘴与展布器(输送管)一体，输送管前圆后方全新设计，布易展开  
Built in Nozzle + Fabric Trans Duct, Round to Rectangular design for better extending of fabric.



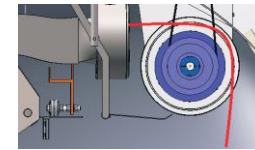
### 提布高度 LIFTING HEIGHT

提布轮设计在机器内部，布槽上方，具有极少的提升高度，从而将织物张力减至最小  
Builtin Lifter Reel Design, Minimized Lifting height to the fabric thus lowest tension obtained for processing.



### 经过提布轮布的方向改变角度 LIFTING ANGLE

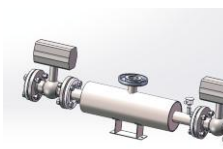
转90度/布张力小，摩擦小  
Fabric Lifting Angle upto 90°, fabric runs extra low tension and friction.



# WP-HT

### 高温排放温度 HT DRAINING

智能型染缸设计，染缸压力可依温度自动调整，因此，高温排放于90°C以下即可开始  
Hot draining is allowed to be carried from 90°C by a HT draining system.



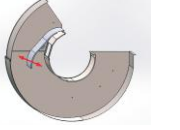
### 同步降温水洗 CCR

采用CCR 降温同步水洗，降温水用于水洗，并支持高温排放  
CCR allows rinsing by the cooling water, also Hot draining system is built in.



### 摆布后储布空间调整 ADJUSTABLE CHAMBER

箱型储布空间，可依布克重，前后可调整储布空间，布的排列顺序，先进先出  
Fabric Chamber can be adjusted according weight of fabric to ensure fabric running smoothly.



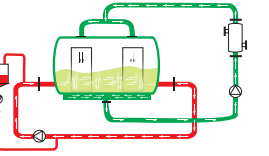
### 副缸数量及功能 DOSING TANK

2副缸设计，其中1桶具计量功能，另一桶为粉体（如芒硝等）之注入功能  
Wet and Dry chemical dosing tanks are considered for most convenient operation.



### 染料及助剂计量 DOSING

智慧型计，带缸底横向循环系统，染料及助剂计量注入后先经过横向循环系统充分搅拌再导入喷嘴  
Dosing to be carried by the Horizontal circulation ensures even liquid to be transferred to the fabric anyway.



### 染机设计 DESIGN

复杂问题简单解决，TEXLINK在解决匀染和节能减排方向不断研发  
TEXLINK design to Reduce Water, Electricity, Steam consumption for proper dyeing solution.  
Continuously contribute "VALUE CREATED" service and products for textiles industry.



### 染机人机界面控制器 CONTROLLER

与德国SEDO TREE POINT公司为长期伙伴，合作经验丰富。  
亦可搭配其他控制器如SETEX  
Standard with Sedo Tree Point controller, also Setex is available for optional.



### 染色控制 DYEING CONTROL

染程洗水即时监控最佳化，由感应器监测缸内液体波长确定是否已清洗干净  
optical turbidity sensing system for rinsing contro.



### 自动圈时控制 AUTO CIRCLE TIME

自动圈时控制，布槽载量，织物长度不同情况下，仍然保证织物通过喷嘴的次数一致，达至匀染  
Auto circle time control, speed of each nozzle can be adjusted according to length of fabric, to ensure even dyeing.



### 染色再现性 ONE TIME RIGHT DYEING

全自动染色控制外加精准水位，温度控制，极其优化的整机设计，保证染色一次中色率高，染色再现性高  
High Performance machine combined with accuracy sensing to level and temp. both OTRD and Repeat Dyeing ratio are on higher side.

