

WP-HT
LOW TENSION
EVEN-FLOW
DYEING MACHINE
匀宝高温高压低张力
匀流染色机



TECHNICAL DATA

Liquor Ratio: 1:3-5
Max.Lifting speed: 500M/Min
Designed Temperature: 140°C
Designed Pressure: 3.5Mbar
Heating Gradient: 5°C/Min.form 25°C-100°C ;
2.5°C/Min.form 100°C-130°C
Cooling Gradient: 3°C/Min.form 130°C-100°C ;
2°C/Min.form 100°C-85°C

技术参数

浴比：1:3-5
最高提升速度：500M/Min
最高设计温度：140°C
压力：3.5Mbar
升温速率：25°C-100°C，平均5°C每分钟；
100°C-130°C，平均2.5°C每分钟
降温速率：130°C-100°C，平均3°C每分钟；
100°C-85°C，平均2°C每分钟

Product features 产品优势

WINBOX is an innovative water flow dyeing machine suitable for pre-treatment, dyeing, after treatment of fabric in rope form.

- 1-Extra low liquor ratio, 1:3-4.5 for normal active dyeing, water consumption is Between 25-45L per kg fabric (from Light to Dark Color)
- 2-Even-flow system makes the dyeing liquid circulating in horizontal manner during processing, which increased 300% circulation ratio.
- 3-Even-flow dosing system to ensure consistence of dyeing liquor when contact fabric through the pressure modulation nozzle to avoid un-even dyeing.
- 4-Minimized Lifting Height design ensures minimum fabric tension during processing,it is most important for the size stable of sensitive fabric like Lycra, Spandex, Viscose Modal after dyeing.
- 5-Typical Processing time can be 4.5-5hours.

匀宝染色机是新型液流染色机，几乎适用于所有布种，具以下特点：

- 1-超低浴比，活性染色的浴比为：1:3-4.5；每公斤布总耗水量为25-45L（浅色至深色）
- 2-特殊的匀流系统令染液在染色过程中，垂直循环的同时横向循环，从而增加三倍的循环效率。
- 3-匀流加料系统和压力可调的喷嘴保证了织物与均匀染液和缓接触，相对一些敏感织物如人造棉，黏胶，莫代尔以及竹纤维，染色的一次成功率得以保证。
- 4-织物提升高度的最小化设计，保证了处染过程中织物张力最小化，从而保证弹力织物如拉架，氨纶等织物的尺寸稳定性。
- 5-总工艺时间可达4.5-5小时。

Because of saving compare with conventional Dyeing machine:

- 1- Chemicals Auxiliaries saving 40-50%;
- 2- Dyes saving 5-10%;
- 3- Sewage reducing 60%;
- 4- Water,Steam saving 50%;
- 5- Electricity Power saving 50%.

匀宝染色机有节约能耗的特点。

与传统的溢流染色机相比：

- 1- 化学助剂可节约40-50%；
- 2- 染料可节约5-10%；
- 3- 排污可减少60%；
- 4- 水气可节约50%；
- 5- 电可节约50%。



WP-HT

匀宝高温高压低张力匀流染色机

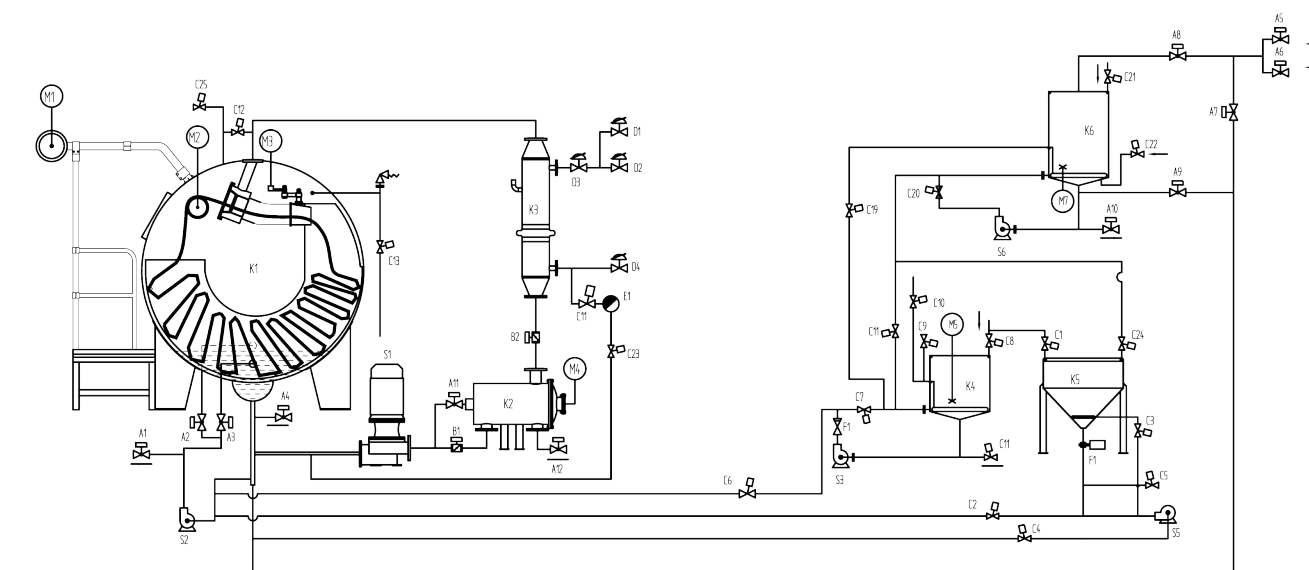
WINPLUS H.T. LOW TENSION EVENFLOW DYEING MACHINE



www.texlinkmachine.com



SCHEMATIC DIAGRAM 流程图



K1. Main Kier 主缸
K2. Filter 过滤器
K3. Heat Exchanger 散热器
K4. Dosing Tank 颜料桶

K5. Salt Dosing Tank 加盐桶
K6. Storage Tank 预备缸
S1. Main Pump 主泵
S2. Circulation Pump 循环泵

S3. Dosing Pump 加料泵
S5. Salt Dosing Pump 加盐泵
S6. STK Dosing Pump 预备缸加盐泵

CHOOSE YOUR MODEL 技术选型

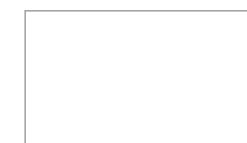
MODEL 机型	CAPACITY(KG) 载量	MAIN PUMP POWER (KW) 主泵功率	INSTALLED POWER (KW) 总功率	DIMENSIONS(MM) 外形尺寸		
				Length 长	Width 宽	Height 高
WP-HT-1T200	200	7.5	18.8	3300	5100	3100
WP-HT-1T250	250	7.5	18.8	3500	5100	3100
WP-HT-2T250	500	15	29	4350	5300	3100
WP-HT-3T250	750	18.5	36	5600	5400	3100
WP-HT-4T250	1000	22	41.3	7500	5800	3100
WP-HT-6T250	1500	18.5*2	63.5	10000	5800	3100

Manufacturer: TEXLINK ENGINEERING CO., LTD.

制造商: 惠州泰纶纺织机械有限公司

中国-广东省惠州市博罗县洲镇禾山工业区
Texlink Industrial Park ,HeShan Village ,YuanZhou Town ,
BoLuo County ,HuiZhou 516123,P.R.China
Tel:86-752-6650 928 Fax:+86-752-6650 298
E-mail:sales@texlinkmachine.com

DISTRIBUTOR.
经销商



B-07

特殊布种 SPECIAL FABRIC

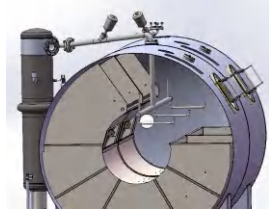
可开幅式运行，易卷边布亦可使用。可行双股入布

Thanks to special nozzle design, open width fabric and double ropes can be also applied smoothly.

缸内清洗 TANK WASHING

缸内具清洗机构，可自动喷洗缸体，换色操作也不复杂

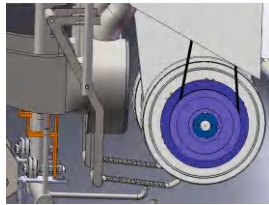
Automatic Tank washing system to ensure a clean machine for even color change.



防缠车自动解缠 ANTI-TANGLE

具自动侦测功能，感应后提布轮以变频控制反转解缠，缠车发生率极低

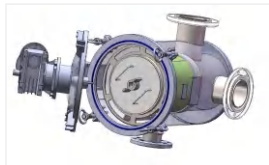
Automatic Tangle release is carried by inverter FOR/REV.



棉絮过滤器 AUTO FILTER

全自动棉絮过滤清除系统，不需人工操作

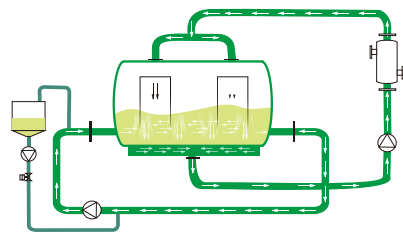
Auto filtering system.



染液横向循环 CIRCULATION

Dual Circulation design, dyeing liquid circulation efficiency increased 300%.

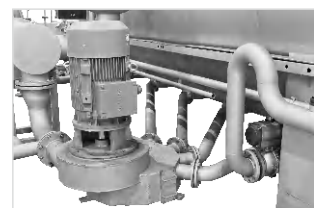
纵向及横向双循环系统设计，染液均匀度提高300%



主泵循环 MAIN PUMP

多吸入口染色主泵，从缸底不同位置吸水并被主泵搅拌均匀再导入喷嘴，大幅提升匀染率

Multi inlet dyeing pump can also greatly increase uniformity of dyeing liquid.



喷嘴设计 NOZZLE DESIGN

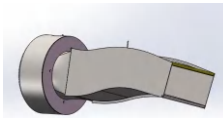
根据布种可更换180MM或135MM喷嘴，几乎适应所有布重范围
Interchangeable nozzle between 180/135mm, almost suitable for all kinds of fabric in the market.



展布设计 FABRIC TRANS DUCT

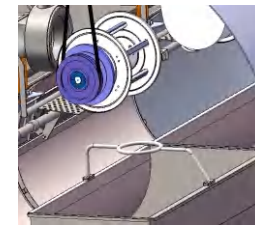
喷嘴与展布器(输送管)一体，输送管前后方全新设计，布易展开

Built in Nozzle + Fabric Trans Duct, Round to Rectangular design for better extending of fabric.



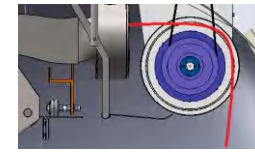
提布高度 LIFTING HEIGHT

提布轮设计在机器内部，布槽上方，具有极少的提升高度，从而将织物张力减至最小
Builtin Lifter Reel Design, Minimized Lifting height to the fabric thus lowest tension obtained for processing.



经过提布轮布的方向改变角度 LIFTING ANGLE

转90度/布张力小，摩擦小
Fabric Lifting Angle upto 90°, fabric runs extra low tension and friction.

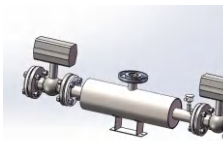


WP-HT

高温排放温度 HT DRAINING

智能型染缸设计，染缸压力可依温度自动调整，因此，高温排放于90°C以下即可开始

Hot draining is allowed to be carried from 90°C by a HT draining system.



同步降温水洗 CCR

采用CCR 降温同步水洗，降温水用于水洗，并支持高温排放

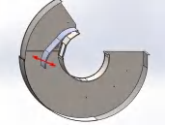
CCR allows rinsing by the cooling water, also Hot draining system is built in.



摆布后储布空间调整 ADJUSTABLE CHAMBER

箱型储布空间，可依布克重，前后可调整储布空间，布的排列顺序，先进先出

Fabric Chamber can be adjusted according weight of fabric to ensure fabric running smoothly.



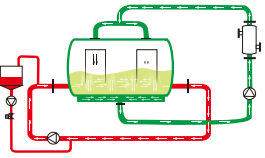
副缸数量及功能 DOSING TANK

2副缸设计，其中1桶具计量功能，另一桶为粉体（如芒硝等）之注入功能
Wet and Dry chemical dosing tanks are considered for most convenient operation.



染料及助剂计量 DOSING

智慧型计，带缸横向循环系统，染料及助剂计量注入后先经过横向循环系统充分搅拌再导入喷嘴
Dosing to be carried by the Horizontal circulation ensures even liquid to be transferred to the fabric anywise.



染机设计 DESIGN

复杂问题简单解决，TEXLINK在解决匀染和节能减排方向不断研发
TEXLINK design to Reduce Water, Electricity, Steam consumption for proper dyeing solution.
Continuously contribute "VALUE CREATED" service and products for textiles industry.



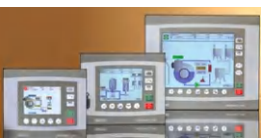
染机人机界面控制器 CONTROLLER

与德国SEDO TREE POINT公司为长期伙伴，合作经验丰富。
亦可搭配其他控制器 如SETEX
Standard with Sedo Tree Point controller, also Setex is available for optional.



染色控制 DYEING CONTROL

染程洗水即时监控最佳化，由感应器监测缸内液体波长确定是否已清洗干净
optical turbidity sensing system for rinsing contro.



自动圈时控制 AUTO CIRCLE TIME

自动圈时控制，布槽载量，织物长度不同情况下，仍然保证织物通过喷嘴的次数一致，达至匀染
Auto circle time control, speed of each nozzle can be adjusted according to length of fabric, to ensure even dyeing.



染色再现性 ONE TIME RIGHT DYEING

全自动染色控制外加精准水位，温度控制，极其优化的整机设计，保证染色一次中色率高，染色再现性高
High Performance machine combined with accuracy sensing to level and temp. both OTRD and Repeat Dyeing ratio are on higher side.

