

GIANT-HT
LOW TENSION
EVEN-FLOW
DYEING
MACHINE

巨染高温高压低张力
匀流染色机



GIANT is developed based on WINBOX,it is specially designed for heavy and wide fabric (terry towel,wide home-tex,chenille carpet,blanket,etc),applied to pre-treatment,dyeing,after treatment of heavy fabric in rope from.The capacity is 400-500kgs per tube.

Thanks similar circulation system is running for double capacity then WINBOX,thus,lower liquor ratio is achieved by this innovation design.

- 1- Extra low liquor ratio ,1:3-4.5 for normal active dyeing ,water consumption is between 24-45L per kg fabric (from light to dark color).
- 2- “Even-flow” system makes the dyeing liquid circulating in horizontal manner during processing ,which increased 300% circulation ratio.
- 3- “Even-flow”dosing system to ensure consistence of dyeing liquor when contact fabric through the extra large soft nozzle to avoid un-even dyeing,and reduce weight lost in loose fabric.
- 4- Minimized lifting height design ensures minimum fabric tension during processing for size stable of treated fabric.
- 5- Typical processing time can be 4.5-5hours.

巨染高温高压染色机是在“匀宝”基础上研发的新款液流染色机，是一款“小块头、大容量”的染色设备，专为厚重织物（如：毛巾、特阔家纺、雪呢尔地毯、毛毯等）设计，每管载量高达400公斤。染液循环系统基于“匀宝”的匀流系统改进而成；由于每管载量几乎增加一倍，因而浴比更低，单位能耗更为节省！

- 1- 超低浴比，活性染色的浴比为1:3-4.5；每公斤布总耗水量为25-45L（浅色至深色）。
- 2- 特殊的匀流系统令染液在染色过程中，垂直循环的同时横向循环，从而增加三倍的循环效率。
- 3- 匀流加料系统，特殊设计的大流量喷嘴保证了织物与均匀染液和缓接触，避免染色不均以及减少对松散型织物的纤维损伤。
- 4- 织物提升高度的最小化设计，保证了处染过程中织物张力最小化，从而保证织物尺寸稳定性。
- 5- 总工艺时间可达4.5-5小时。

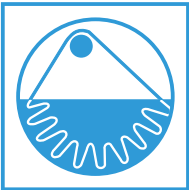


TECHNICAL DATA

Liquor ratio:1:3-5
Max.lifting speed:500M/min.
Designer temperature:140°C
Designed pressure :3.5Mbar
Heating gradient:5°C/min.from25°C-100°C
Cooling gradient:2°C/min.from100°C-85°C

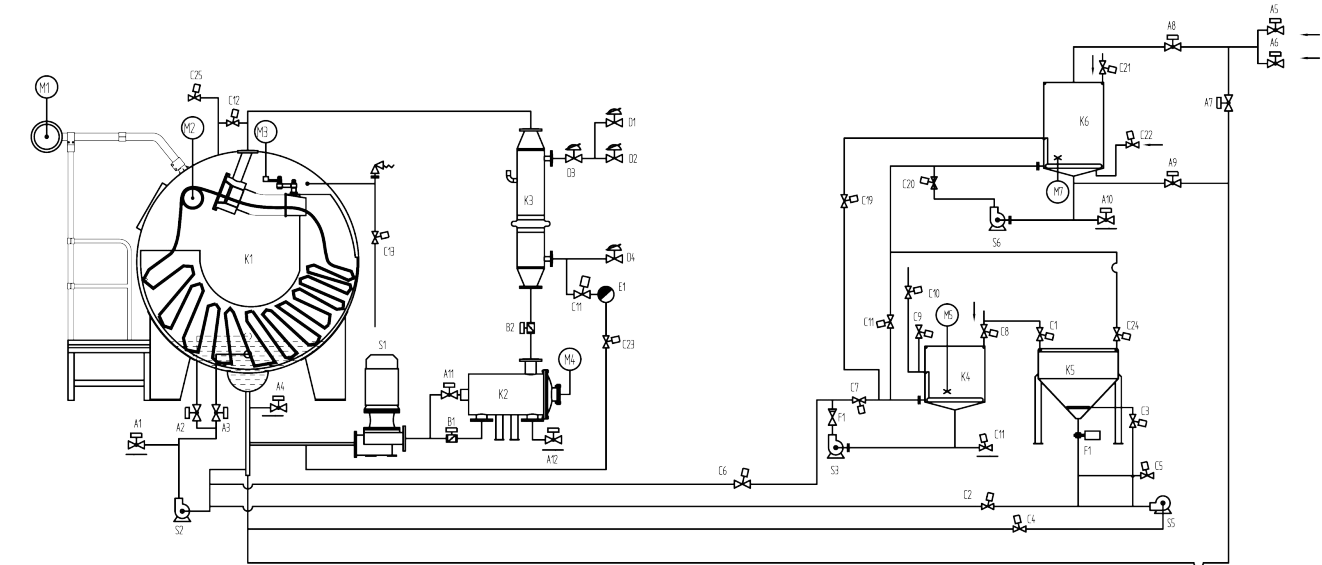
技术参数

浴比：1:3-5
最高提升速度：500M/min
最高设计温度：140°C
压力：3.5Mbar
升温速率：25°C-100°C，平均5°C每分钟
降温速率：100°C-85°C，平均2°C每分钟



www.texlinkmachine.com

SCHEMATIC DIAGRAM 流程图



K1. Main Kier 主缸

K2. Filter 过滤器

K3. Heat Exchanger 散热器

K4. Dosing Tank 颜料桶

K5. Salt Dosing Tank 加盐桶

K6. Storage Tank 预备缸

S1. Main Pump 主泵

S2 . Circulation Pump 循环泵

S3. Dosing Pump 加料泵

S5. Salt Dosing Pump 加盐泵

S6. STK Dosing Pump 预备缸加盐泵

CHOOSE YOUR MODEL 技术选型

MODEL 机型	CAPACITY(KG) 载量	MAIN PUMP POWER (KW) 主泵功率	INSTALLED POWER (KW) 总功率	DIMENSIONS(MM) 外形尺寸		
				Length 长	Width 宽	Height 高
GIANT-HT-1T400	400	7.5	18.8	3800	5100	3100
GIANT-HT-2T400	800	15	29	4900	5100	3100
GIANT-HT-3T400	1200	18.5	36	6500	5300	3100
GIANT-HT-4T400	1600	22	41.3	8500	5400	3100
GIANT-HT-5T400	2000	30	59	10000	5600	3100
GIANT-HT-6T400	2400	18.5*2	63.5	11500	5800	3100

Manufacturer: TEXLINK ENGINEERING CO., LTD.

制造商: 惠州泰纶纺织机械有限公司

中国·广东省惠州市博罗县园洲镇禾山工业区

Texlink Industrial Park ,HeShan Village ,YuanZhou Town ,

BoLuo County ,HuiZhou 516123,P.R.China

Tel:86-752-6650 928 Fax:+86-752-6650 298

E-mail:sales@texlinkmachine.com

DISTRIBUTOR.

经销商



特殊布种 SPECIAL FABRIC

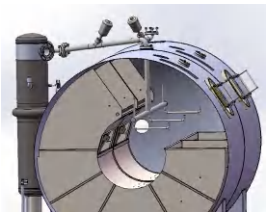
可开幅式运行，易卷边布亦可使用。可行双股入布

Thanks to special nozzle design, open width fabric and double ropes can be also applied smoothly.

缸内清洗 TANK WASHING

缸内具清洗机构，可自动喷洗缸体，换色操作也不复杂

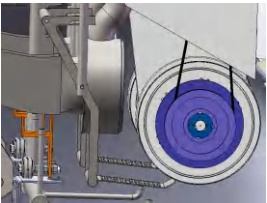
Automatic Tank washing system to ensure a clean machine for even color change.



防缠车自动解缠 ANTI-TANGLE

具自动侦测功能，感应后提布轮以变频控制反转解缠，缠车发生率极低

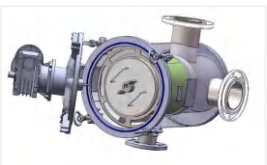
Automatic Tangle release is carried by inverter FOR/REV.



棉絮过滤器 AUTO FILTER

全自动棉絮过滤清除系统，不需人工操作

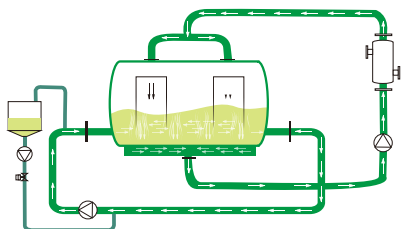
Auto filtering system.



染液横向循环 CIRCULATION

Dual Circulation design, dyeing liquid circulation efficiency increased 300%.

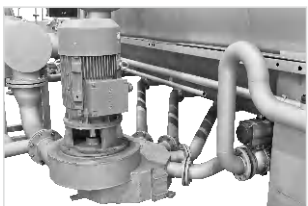
纵向及横向双循环系统设计，染液均匀度提高300%



主泵循环 MAIN PUMP

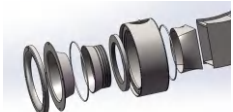
多吸入口染色主泵，从缸底不同位置吸水并被主泵搅拌均匀再导入喷嘴,大幅提升匀染率

Multi inlet dyeing pump can also greatly increase uniformity of dyeing liquid.



喷嘴设计 NOZZLE DESIGN

根据布种可更换180MM或135MM喷嘴，几乎适应所有布重范围
Interchangeable nozzle between 180/135mm, almost suitable for all kinds of fabric in the market.



展布设计 FABRIC TRANS DUCT

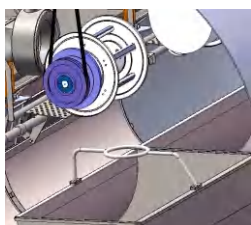
喷嘴与摆布器(输送管)一体，输送管前圆后方全新设计，布易展开

Built in Nozzle + Fabric Trans Duct, Round to Rectangular design for better extending of fabric.



提布高度 LIFTING HEIGHT

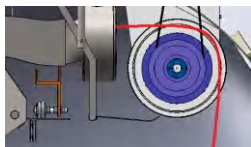
提布轮设计在机器内部，布槽上方，具有极少的提升高度，从而将织物张力减至最小
Builtin Lifter Reel Design, Minimized Lifting height to the fabric thus lowest tension obtained for processing.



经过提布轮布的方向改变角度 LIFTING ANGLE

转90度/布张力小，摩擦小

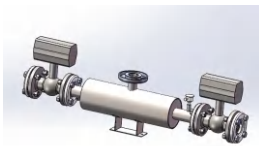
Fabric Lifting Angle upto 90°, fabric runs extra low tension and friction.



高温排放温度 HT DRAINING

智能型染缸设计，染缸压力可依温度自动调整，因此，高温排放于90°C以下即可开始

Hot draining is allowed to be carried from 90°C by a HT draining system.



同步降温水洗 CCR

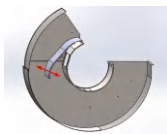
采用CCR 降温同步水洗，降温水用于水洗，并支持高温排放

CCR allows rinsing by the cooling water, also Hot draining system is built in.

摆布后储布空间调整 ADJUSTABLE CHAMBER

箱型储布空间，可依布克重，前后可调整储布空间，布的排列依序，先进先出

Fabric Chamber can be adjusted according weight of fabric to ensure fabric running smoothly.



副缸数量及功能 DOSING TANK

2副缸设计，其中1桶具计量功能，另一桶为粉体（如芒硝等）之注入功能

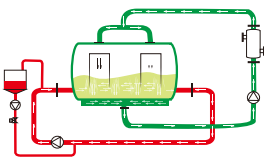
Wet and Dry chemical dosing tanks are considered for most convenient operation.



染料及助剂计量 DOSING

智慧型计，带缸底横向循环系统，染料及助剂计量注入后先经过横向循环系统充分搅拌再导入喷嘴

Dosing to be carried by the Horizontal circulation ensures even liquid to be transferred to the fabric anywise.



染机设计 DESIGN

复杂问题简单解决，TEXLINK在解决匀染和节能减排方向不断研发

TEXLINK design to Reduce Water, Electricity, Steam consumption for proper dyeing solution.

Continuously contribute "VALUE CREATED" service and products for textiles industry.

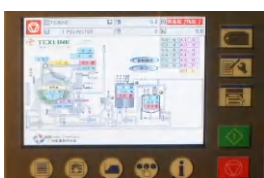


染机人机界面控制器 CONTROLLER

与德国SEDO TREE POINT公司为长期伙伴，合作经验丰富。

亦可搭配其他控制器 如SETEX

Standard with Sedo Tree Point controller, also Setex is available for optional.



染色控制 DYEING CONTROL

染程洗水即时监控最佳化，由感应器监测缸内液体波长确定是否已清洗干净
optical turbidity sensing system for rinsing contro.



自动圈时控制 AUTO CIRCLE TIME

自动圈时控制，布槽载量，织物长度不同情况下，仍然保证织物通过喷嘴的次数一致，达至匀染

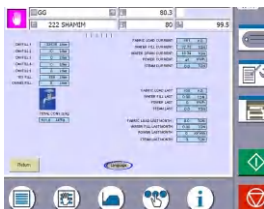
Auto circle time control, speed of each nozzle can be adjusted according to length of fabric, to ensure even dyeing.



染色再现性 ONE TIME RIGHT DYEING

全自动染色控制外加精准水位，温度控制，极其优化的整机设计，保证染色一次中色率高，染色再现性高

High Performance machine combined with accuracy sensing to level and temp. both OTRD and Repeat Dyeing ratio are on higher side.



GIANT-HT