

# ML

## Multi Loading Soft Treatment H.T. Dyeing Machine 多染高温柔软处理 溢流染色机

### SELECT YOUR Technical Data 技术资料

- 浴比: 1:4 -10
- 最大值操作温度.: 140°C
- 绞车速度自动调节
- 通过泵变频器和喷嘴表可调节的喷嘴压力
- 灌装控制用流量计
- 自动清洗过滤器
- 自动剂量
- 干盐喂养
- H.T.排水量高至90°C
- 动力排水

- Liquor Ratio: From 1:4 -10
- Max. Operation Temp.: 140°C
- Winch Speed automatic adjustable by seam detector
- Nozzle Pressure to be adjustable by pump inverter and nozzle gauge
- Flow meter for filling control
- Automatic Cleaning filter
- Automatic Dosing
- Dry salt feeding
- H.T. Draining up to 90°C
- Power Draining



ML is designed for pretreatment, dyeing & after treatment of woven, knits and nonwovens in both synthetic fibers and natural fibers. •Power Draining

“Multi Loading多染”设计用于合成纤维和天然纤维中的编织布、针织衫、非织造布的预处理、染色和后处理。



ML is capable to handle crease, surface sensitive fabric since fabric speed can be 0- 600m/min, the soft treatment flow and low-tension swimming transportation design guarantee most relax and soft treatment to the fabric rope.

“多染”能够处理折痕，表面敏感的织物，因为织物的速度可达600米/分钟，柔软的处理流程和低张力泳式运行设计保证了绳状织物最放松和柔软的处理。尤其针对锦氨，拉架类织物，“多染”的处理可谓游刃有余，保证匀染性的同时，亦可让织物保持完美的布面效果。

ML standard nominal loading capacity are 100, 150, 250kgs per tube, and max 4Tubes are available to meet different requirements in avoid overproduction. The real batch capacity and liquor ratio are subjected to the material and structures of fabric been processed.



ML标准标称负荷容量为每管100、150、250kg，最多4管，满足不同的载量的生产排产。实际载量和浴比根据加工织物的材料和结构会有所不同。

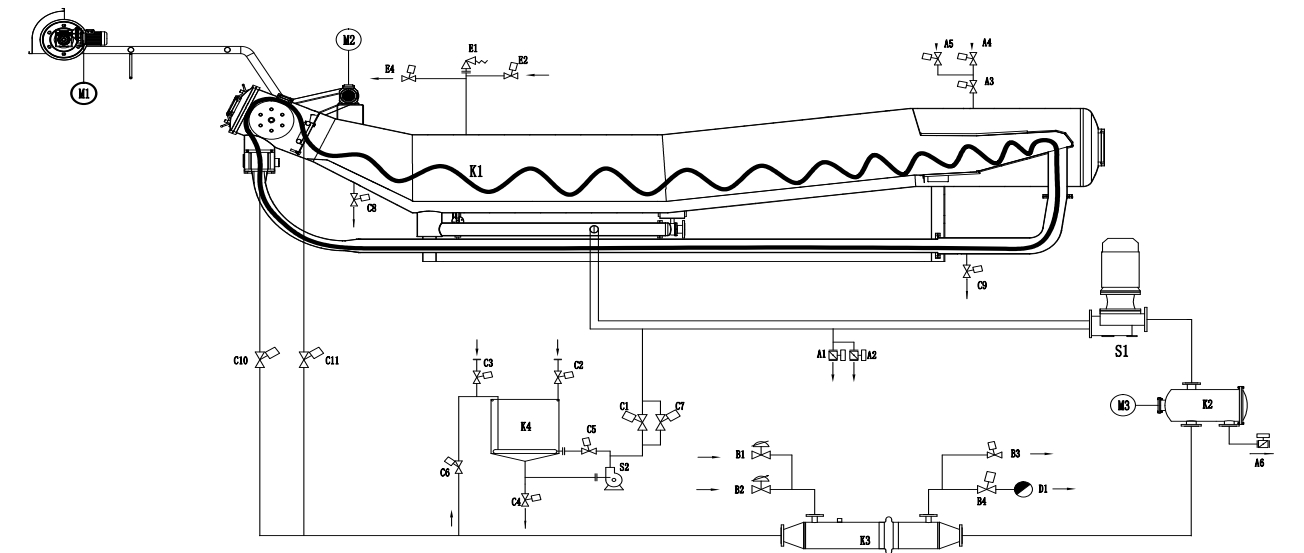


# ML 多染

## 高温柔软处理溢流染色机 Multi Loading Soft Treatment H.T. Dyeing Machine



FABRIC DYEING  
织物染色



- K1=Main Kier主缸
- K2=Filter过滤器
- K3=Heat Exchanger 换热器
- K4=Dosing Tank染料桶
- A1= DM 1st Draining 主缸第一动力排水球阀
- A2=DM 2nd Draining 主缸第二动力排水球阀
- B1=Heating升温风膜阀
- B2=Cooling降温风膜阀
- C1=TK Feeding注料角阀
- C2=TK Filling料桶进水角阀
- C3=TK Heating料桶进汽角阀
- C4=TK Draining料桶排污角阀
- D1=Condensate Draining Protection 换热器排冷凝水保护角阀
- M1=Unloading Motor出布马达
- M2=Lifting Motor 提布马达
- M3=Filter Motor过滤器马达
- A3=DM Main inlet valve主缸进水总阀
- A4=DM1st Filling 主缸第一进水阀
- B3=Condenser Dr. 排冷却水角阀
- B4=Steam trap排冷凝水疏水阀
- C5=TK Mixing料桶回冲角阀
- C6=TK Flow Return主缸回流料桶角阀
- C7=TK Feeding定量注料阀
- C8= DM Rinsing 主缸溢流阀
- S1=Main Pump 主泵
- A5=TK Pump 注料泵
- A6=DM2nd Filling 主缸第二进水球阀
- A6=Filter Draining 主缸排水球阀 (排布毛)
- C9=DM Rinsing 主缸排余液阀
- C10=DM NOZZLE主缸喷嘴
- C11=DM FLOW REVERSE主缸喷嘴反冲阀
- E1=DM Safty Relief主缸安全阀
- E2=DM Vacuum主缸真空阀
- E3=DM Depressure 主缸排压阀

### SELECT YOUR MODEL 技术选型

MODEL 产品型号	CAPACITY 容量(KG)	MAIN PUMP POWER 主泵功率 (KW)	DIMENSIONS(MM)		
			Length 总长度	Width 宽度	Height 高度
ML-150	150	15	9500	2000	2800
ML-250	250	18.5	11000	2000	2800
ML-D-300	300	30	11000	2400	2800
ML-D-500	500	45	11500	2400	2800
ML-Q-600	600	55	11500	4000	2800
ML-Q-1000	1000	55	11500	4000	2800

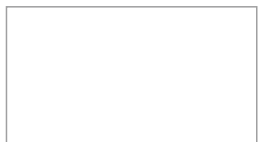
\*The dimensions are subjected to design change

Manufacturer: TEXLINK ENGINEERING CO., LTD.

制造商: 惠州泰纶纺织机械有限公司

中国-广东省惠州市博罗县园洲镇禾山工业区  
Texlink Industrial Park ,HeShan Village ,YuanZhou Town ,  
BoLuo County ,HuiZhou 516123,P.R.China  
Tel:86-752-6650 928 Fax:+86-752-6650 298  
E-mail:sales@texlinkmachine.com

DISTRIBUTOR.  
经销商



ML



#### 4.1 溢流洗水 Overflow Rinsing

可从90°C开始溢流洗水，以避免在聚酯织物加工过程中在机器和织物的内表面形成聚合物。

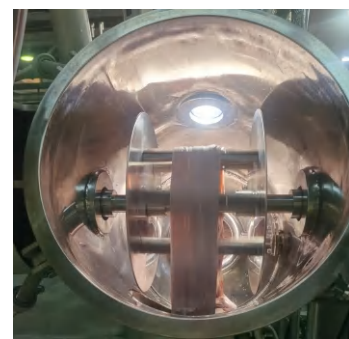
Overflow can be started from 90°C to avoid built up of Oligomers on the inner surface of machine and fabric during processing of polyester fabric.



#### 4.2 防扭曲的织物横向结构 Anti-Twist Fabric Trans

泳式织物运输隧道采用圆形和方形组合，避免织物扭曲

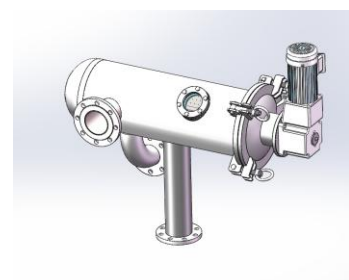
Fabric transportation tunnel is designed as combination of Round and Oval to avoid the fabric rope to be twisted.



#### 4.3 提升系统 MHL Lifting system

织物最小高度提升系统包括光滑不锈钢提升滚筒，以防止提升滚筒拉伸弹性织物伸长。还要安装一个快速停车，以确保停车时立即停止织物，避免摩擦或刮痕

Minimized Height Lifting system for fabric consist of Smooth Stainless Steel winch to prevent elongation of elastic fabric by the pulling force of winch. Also a quick stop winch to be installed to ensure immediately stop of fabric, avoiding rubbing or scratching marks.



#### 4.4 自动过滤器 AUTO FILTER

水平式自动过滤系统  
Horizontal Auto filtering system.



左视图 Left side view



#### 4.5 操作简单的定量注料系统 User friendly dosing system

多染配备了功能齐全操作想到的注料系统，由定量阀、颜料泵组成，可靠的曲线控制，保证其稳定性能。

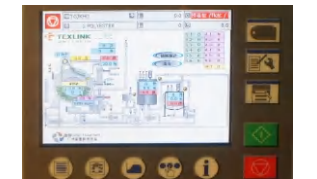
ML is equipped with stable and easy operate dosing system which consist of dosing valve and dosing pump, reliable curve control to ensure the stability.



#### 染机人机界面控制器 CONTROLLER

与德国SEDO TREE POINT公司为长期伙伴，合作经验丰富。亦可搭配其他控制器如SETEX

Standard with Sedo Tree Point controller, also Setex is available for optional.



#### 染色机控制 DYEING CONTROL

标配SETEXX 和 SEDO 控制器

Standard with Setex and Sedo Tree Point dyeing controller.



#### 自动圈时 AUTO CIRCLE TIME

自动圈时，每管的行布速度根据布匹长度独立调整，减少管差

Auto Circle Time Control, Speed Of Each Nozzle Can Be Adjusted According To Length Of Fabric, To Ensure Even Dyeing.



#### 一次中色率 ONE TIME RIGHT DYEING

精准的传感器和高效的机器相结合保证水位，水量，温度都在可控范围，因此“一次中色率”和“染色重现率”可达至最高。

High Performance machine combined with accuracy sensing to level and temp. both OTRD and Repeat Dyeing ratio are on higher side.

