

1. 纱架 Carrier



1. Can carrier for hank yarn, muffs or loose fibers.
2. Basket carriers for loose fibers.
3. Carrier for beams and tapes.
4. Hank Yarn Carrier.
5. Cone / Tube / Spindle.

1.1 底碟 Bottom Disc



Guiding sleeve
纱竹导套



Forced Pressure is distributed
equally over the package
纱竹导套

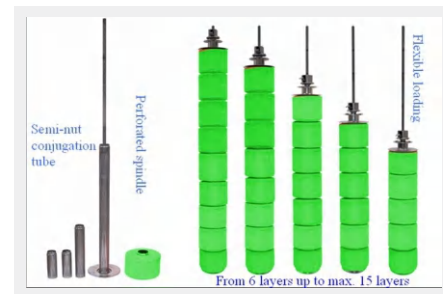
1. Fits perfectly with the spindle.
2. Stops leakage between bottom disc and spindle.
3. With guiding sleeve, bottom disc is always at right angle with the spindle.
4. When pressing, pressure is distributed over the package in radial direction.
5. Density of package is more even.
6. Improved dyeing quality.

1. 与纱竹完美配合;
2. 减少底碟与纱竹间的漏液;
3. 纱竹导套保证底碟与纱竹的垂直;
4. 施加压力时, 压力被均匀分散到四周;
5. 筒纱密度更均匀;
6. 提升染色质量。

1.3 可变量筒纱竹设计 Variable Loading Capacity

1. Perforated Spindle tube is sectional type design
2. Remove upper to reduce loading of cones, no dummy cone is required.
3. Flexible loading from 6-15 layers.

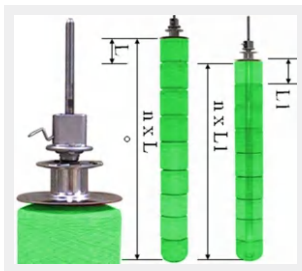
1. 纱竹套管的设计为载量可变的分段式设计
2. 去除任意套管可减少相应的筒纱, 而无需用假筒纱
3. 载量可从6至15层任意安排



1.4 自锁式快速顶锁 Follow Down Fastener

1. Top and bottom plates are pressed against the package, the density at the edges are same as the column itself.
2. Outside-in flow: packages are pressed further by total system pressure.
3. When package shrinks, follow down fastener travels down.
4. Inside-out flow: packages tends to expand upward, pushing against the fastener.
5. Follow down fastener cannot go up.
6. Result: total flow without leakage.

1. 底碟和顶碟沿着筒纱压紧, 不泄露染液;
2. 外流时, 筒纱被系统施加压力防止漏液;
3. 筒纱收缩时, 自落顶锁自动下落压紧;
4. 内流时, 顶锁压住筒纱, 保证染液不泄露;
5. 自落顶锁只能单向压紧而不会松开;
6. 结果: 整个染色过程没有染液泄露, 匀染得以保证。



L=Package height before dyeing (compression may be required during loading)
L1=Package height after dyeing (shrinkage appear)
n=Number of packages per spindle

L=染色前筒子高度(载纱时有时需要压紧)
L1=染色后筒子高度(缩水)
n=每支纱杆的载纱量



CONFAB is suitable for processing of Natural, Synthetic Fiber and their blends in from of yarn and fiber. compact designed 90° Elbow flow reversal device combined with integrated heat exchanger and Centrifugal pump, Achieves low liquor Ratio to 1:3-6

CONFAB can fulfill yarn dyeing in Package, Hank, Loose Fiber, Zipper, Beam, Cake form etc. When change different yarn Carrier.

CONFAB是高效节能的筒子纱染色机, 90度L型转向器, 内置高效的盘管式换热器, 整体式连接高效离心泵。最小溶比可达1:3。

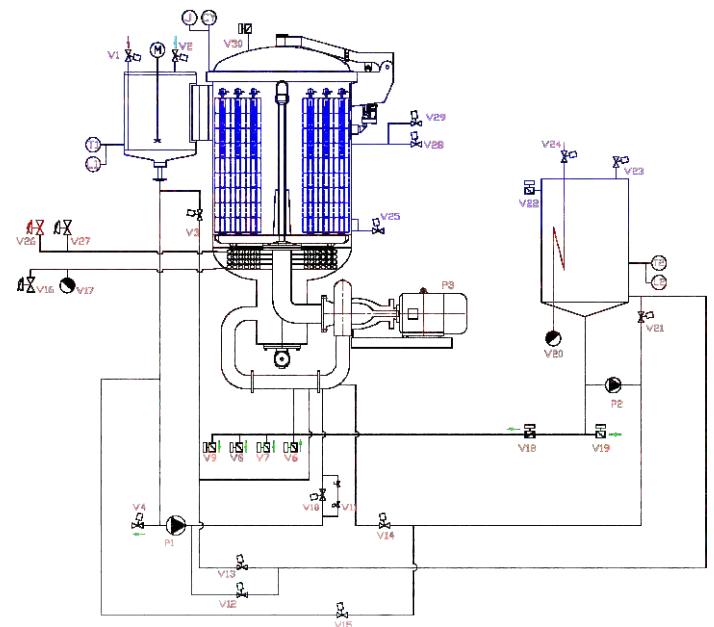
CONFAB适用于涤纶、棉、麻、羊毛、晴纶以及混纺纤维筒子纱染色以及前后处理; 更换不同的纱笼, 也可进行绞纱, 散纤, 拉链, 经轴, 以及纱饼染色以及前后处理。

TECHNICAL DATA

Model: CONFAB
Liquor Ratio: 1:3-6
Designed Temp: 140°C
Designed Pressure: 4.5Mbar
Working Pressure: 4bar
Heating Rate: 25°C-130°C, average 5°C/min
Cooling Rate: 130°C-80°C, average 2.5°C/min

技术参数

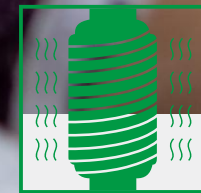
机型: CONFAB
溶比: 1:3-6
设计温度: 140°C
设计压力: 4.5Mbar
最高工作压力: 4bar
加热率: 25°C-130°C,
约35分钟(饱和蒸汽压力为7bar)
冷却率: 130°C-80°C
约25分钟(冷却水压力为3bar)



CONFAB

高温高压筒子纱染色机

H.T. PACKAGE YARN DYEING MACHINE



www.texlinkmachine.com



Model 机型	No. of layers 层数	No. of Spindles 纱竹数量	No. of Cones 筒纱数量	CAPACITY (KG) 载量	Main pump Power(KW) 主泵功率	Installed power 总功率 (kW)	Dimensions外型尺寸 (MM)			
							W宽	D深	H高	
									气垫式 Air pad	气垫式 Air pad
CONFAB-43	5	4	20	20	4	8.5	1730	1950	2178	3415
	6	4	24	24	4	8.5	1730	1950	2340	3739
	7	4	28	28	4	8.5	1730	1950	2502	4063
	8	4	32	32	4	8.5	1730	1950	2664	4387
	10	4	40	40	5.5	10.5	1730	1950	2988	5035
CONFAB-50	12	4	48	48	5.5	10.5	1730	1950	3312	5683
	7	5	35	35	5.5	10.5	1780	2048	2622	4233
	8	5	40	40	5.5	10.5	1780	2048	2784	4557
	9	5	45	45	5.5	10.5	1780	2048	2946	4881
	10	5	50	50	7.5	10.5	1780	2048	3108	5205
CONFAB-55	12	5	60	60	7.5	14	1780	2048	3432	5853
	9	6	54	54	7.5	10.5	1780	2113	2988	4921
	10	6	60	60	7.5	14	1780	2113	3148	5245
	11	6	66	66	11	14.7	1780	2113	3310	5569
	12	6	72	72	11	14.7	1780	2113	3472	5893
CONFAB-70	9	9	81	81	11	19.5	2080	2563	3178	5129
	10	9	90	90	11	19.5	2080	2563	3340	5453
	11	9	99	99	11	19.5	2080	2563	3502	5777
	12	9	108	108	11	23	2080	2563	3664	6101
	9	12	108	108	11	23	2230	2563	3196	5147
CONFAB-75	10	12	120	120	18.5	23	2230	2563	3358	5471
	11	12	132	132	18.5	23	2230	2563	3520	5795
	12	12	144	144	18.5	23	2230	2563	3682	6119
	6	19	114	114	18.5	23	2560	2710	2748	4233
	7	19	133	133	18.5	23	2560	2710	2910	4557
CONFAB-90	8	19	152	152	18.5	28.2	2560	2710	3072	4881
	9	19	171	171	22	28.2	2560	2853	3379	5390
	10	19	190	190	22	28.2	2560	2853	3541	5674
	11	19	209	209	22	28.2	2560	2853	3703	5998
	12	19	228	228	22	28.2	2560	2853	3865	6322
CONFAB-110	9	30	270	270	30	37.7	2830	3098	3763	5859
	10	30	300	300	30	37.7	2830	3098	3925	6183
	11	30	330	330	30	44.7	2830	3098	4087	6507
	12	30	360	360	37	44.7	2830	3098	4249	6831
	10	36	360	360	37	53.5	3200	3340	3937	6195
CONFAB-120	11	36	396	396	37	53.5	3200	3340	4099	6519
	12	36	432	432	37	53.5	3200	3340	4261	6843
	10	45	450	450	45	63.5	3690	3465	4058	6316
	11	45	495	495	45	63.5	3690	3465	4220	6640
	12	45	540	540	55	63.5	3690	3705	4382	6964
CONFAB-140	13	45	584	584	55	85.5	3690	3705	4544	7288
	10	57	570	570	55	86.5	4050	3885	4248	6506
	11	57	627	627	75	86.5	4050	3885	4410	6830
	12	57	684	684	75	86.5	4050	3885	4572	7154
	13	57	741	741	75	105	4050	3885	4734	7478
CONFAB-152	14	57	798	798	75	105	4050	3885	4896	7802
	15	57	855	855	90	105	4050	4495	5128	8196
	16	57	912	912	90	105	4050	4495	5290	8520
	10	68	680	680	75	105	4200	4585	4362	6620
	12	68	816	816	75	105	4200	4585	4686	7268
CONFAB-170	14	68	952	952	90	125	4200	4585	5010	7916
	15	68	1020	1020	90	125	4200	4585	5172	8240
	16	68	1088	1088	110	125	4200	4760	5485	7915
	10	87	870	870	90	125	4450	4845	4418	6676
	12	87	1044	1044	90	125	4450	4845	4742	7324
CONFAB-186	13	87	1113	1113	110	125	4450	4845	4904	7648
	14	87	1218	1218	110	147	4450	4845	5066	7972
	15	87	1305	1305	132	147	4450	4895	5308	8401
	16	87	1392	1392	132	147	4450	4895	5470	8725
	10	108	1080	1080	90	147	4570	4963	4670	6953
CONFAB-200	12	108	1296	1296	110	147	4570	4963	4994	7601
	13	108	1404	1404	132	165	4570	4963	5156	7925
	14	108	1512	1512	132	169	4570	4963	5318	8249
	15	108	1620	1620	160	179	4570	4988	5580	8673
	16	108	1728	1728	160	179	4570	4988	5742	8997
CONFAB-225	10	130	1300	1300	132	179	4980	5683	4791	7074
	12	130	1560	1560	160	179	4980	5683	5115	7722
	14	130	1820	1820	160	221	4980	5683	5439	8370
	15	130	1950	1950	160	221	4980	5683	5601	8694
	16	130	2080	2080	225	221	4980	5683	5763	9018
18	130	2340	2340	225	221	4980	5683	6087	9666	

Manufacturer: TEXLINK ENGINEERING CO., LTD.

制造商: 惠州泰纶纺织机械有限公司

中国·广东省惠州市博罗县园洲镇禾山工业区

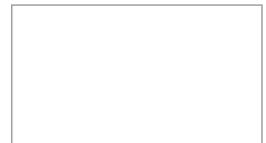
Texlink Industrial Park ,HeShan Village ,YuanZhou Town ,

BoLuo County ,Huizhou 516123, P.R.China

Tel: 86-752-6650 928 Fax: +86-752-6650 298

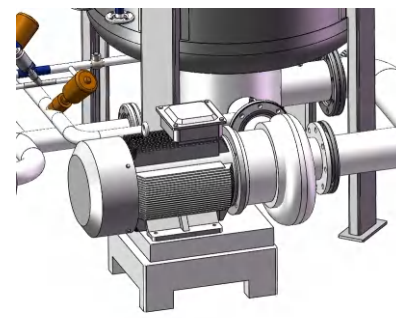
E-mail: sales@texlinkmachine.com

DISTRIBUTOR.
经销商



1.主泵 Main Pump

1. Advantage of Main Pump: High flow rate & Space saving & Energy saving & No pipe work.
2. Proportional pump size matching machine capacity.
3. Fits for high density package 0.45-0.50 Kg/L.
1. 主泵的优点: 大流量 & 节省空间 & 节约资源 & 无管道连接;
2. 比例泵的尺寸与机器容量相匹配;
3. 适合于高密度筒子纱 0.45-0.50 公斤/升。



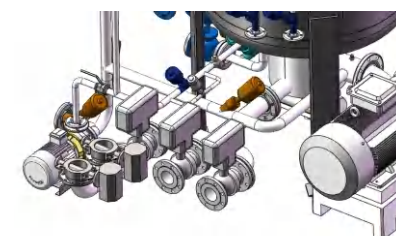
2.变频器控制 Frequency Inverter Controlled Pump

1. Soft start of the main pump.
2. Provide reduction of flow by lowering the speed of main pump, and thus save the electrical energy.
3. Less foam formation.
1. 实现主泵软启动
2. 通过降低主泵的转速减少流动, 从而节省了电能
3. 减少泡沫形成



3.入水排水 Filling & Draining

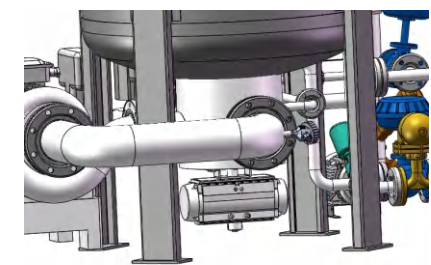
1. Double Programmed Filling and Draining design
2. Reasonable arrangement for easy pipe connection
1. 双入双排程序控制
2. 合理简单管道布置和连接



CONFAB

4.换向装置 Flow Reversal Device

1. Pneumatic Cylinder Drive, precision position control
2. Inside-out and Outside-in flow were controlled by precision flow guide plate
1. 90°风动执行器, 换向精准
2. 内外流由板式倒流器控制, 减少漏液的可能



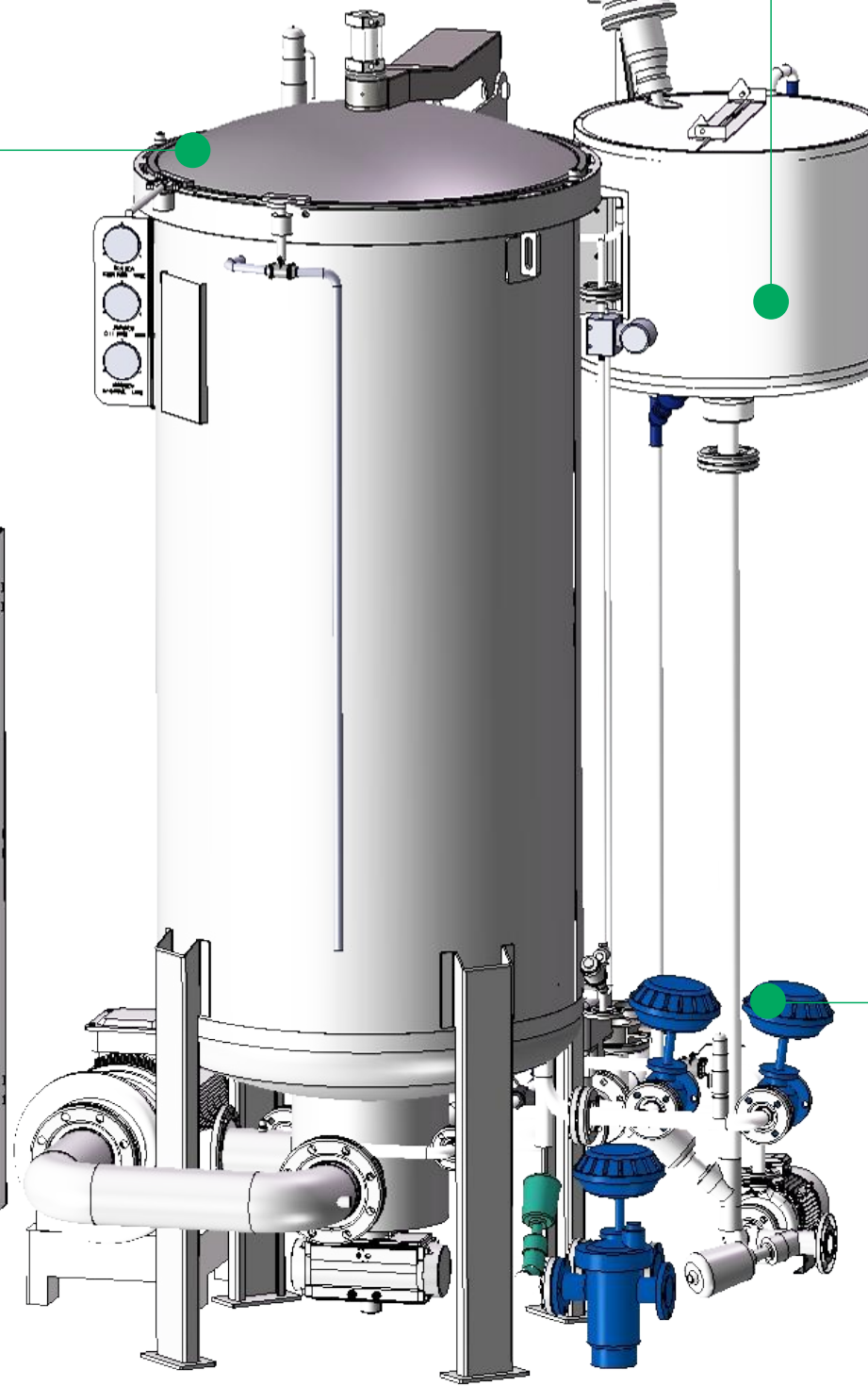
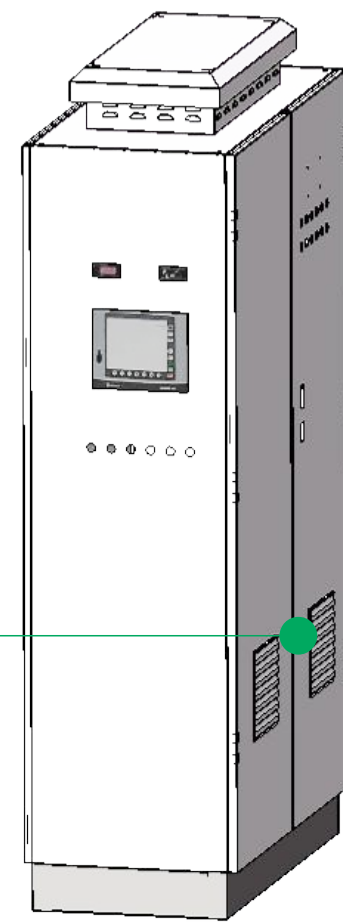
5.水位控制 Level Control

1. Precision Pressure differential transmitter control
2. Accurate up to 1mm
1. 精确压差传感器水位控制
2. 精确度达1MM



6.定量注料 Programmed DOSING system

1. Independent Dosing valve
2. Many dosing curves are available according to process
1. 独立注料活塞阀
2. 多种注料曲线可选



副缸数量及功能 DOSING TANK

多功能预备缸, 不仅根据工艺要求存储下一步骤所需的水, 而且作为第二染料桶, 其功能与第一料桶完全一样。

Multifunction Hot Water Tank - Not only for water storage but also perform as 2nd dosing tank, which functioning same as 1st dosing tank.

安全装置 SAFETY DEVICES

- 开盖重锤+风动开盖装置
- 压力释放安全阀
- 超温翻放阀
- 手动排压阀
- 标准安全阀
- Counter weight + pneumatic Lid Open Devices
- Safety Pressure Release Valve
- Manual interlock vent valve
- Safety valve
- Pressure and temperature interlock

染机设计 DESIGN

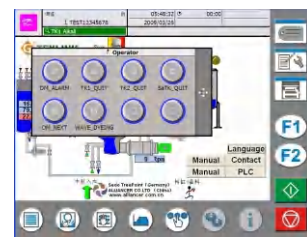
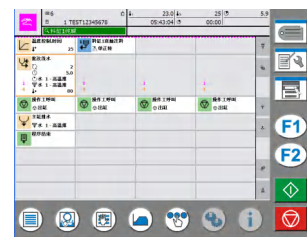
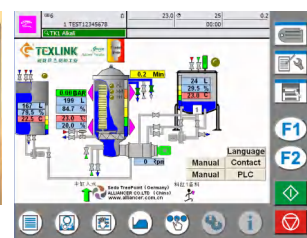
复杂问题简单解决, TEXLINK在解决匀染和节能减排方向不断研发 TEXLINK design to Reduce Water, Electricity, Steam consumption for proper dyeing solution. Continuously contribute "VALUE CREATED" service and products for textiles industry.



染机人机界面控制器 CONTROLLER

与德国SEDO TREE POINT公司为长期伙伴, 合作经验丰富。亦可搭配其他控制器如SETEX

Standard with Sedo Tree Point controller, also Setex is available for optional.



染色控制 DYEING CONTROL

染色洗水即时监控最佳化, 由感应器监测缸内液体波长确定是否已清洗干净

optical turbidity sensing system for rinsing contro.

波浪染色 WAVE DYEING

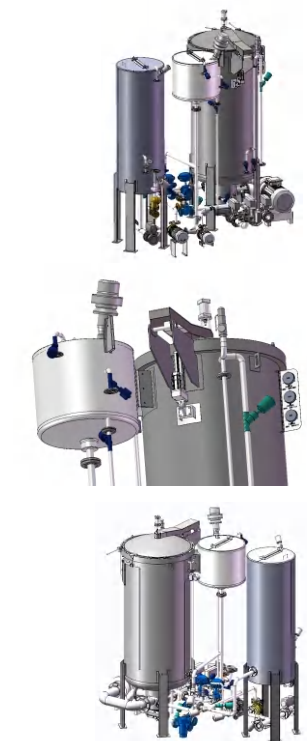
一键式波浪染色操作, 简单切换染色模式。

One Touch Wave Dyeing Apply, Easy Way To Change Dyeing Mode.

染色再现性 ONE TIME RIGHT DYEING

全自动染色控制外加精准水位, 温度控制, 极其优化的整机设计, 保证染色一次中色率高, 染色再现性高。

High Performance machine combined with accuracy sensing to level and temp. both OTRD and Repeat Dyeing ratio are on higher side.



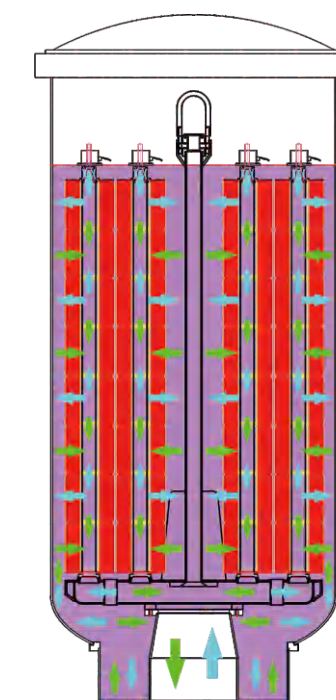
Wave Dye Technology 波浪染色技术

Owing to the reversal function on traditional yarn dyeing machines, the packages could be expanded and contracted by pressure changes during switch of flow, hence increasing the effectiveness and evenness in dyeing.

Since the single flow concept has no switchable feature, the pump should vary its speed to generate pressure difference according to specific principles. By executing a specific period of change in pump frequency, smashing the packages like waves such that it could move under differentiating pressure would lead to perfect utilization the advantage of dual flow concept, in a much lower demand of electricity.

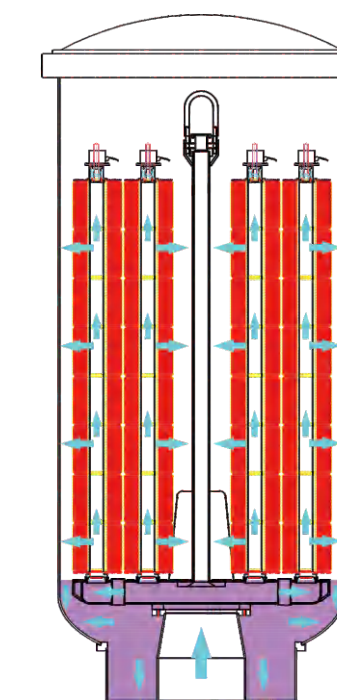
传统筒子纱染色机内外流换向时液流压力变化使筒纱收缩和涨开, 提高上染效率以及匀染率。

波浪染色时, 只使用单向由内到外液流(I/O), 因此可以极大降低浴比。而通过改变主泵频率, 液流压力和流量形成波浪使筒纱获得诸如液流换向时的处染效果。因此波浪染色技术不仅将浴比降低到 1:3, 而且主泵长时间低频运行, 可节省 60-70% 电能。



Traditional Dual Flow dyeing, Level of dyeing is approaching to the top of cones.

传统内外流染色, 液位需完全覆盖筒纱



I/O Single Flow dyeing, Level is kept as lower as pump is running.

单向由内而外染色, 液位可维持在低水位运行

← I/O 内外流
← O/I 外内流