

GIANT Plus H.T LOW TENSION EVENFLOW DYEING MACHINE



GIANT Plus is designed for pretreatment, dyeing & after treatment of woven, knits and nonwovens in both synthetic fibers and natural fibers.

GIANT Plus is capable to handle crease, surface, color sensitive fabric, thanks to high efficiency even-flow circulation system combined MHL low tension lifting system, GIANT Plus can output excellent average dyeing result even under 500kgs/Tube load capacity, no tube and sectional difference appears on the fabric, simultaneously perfect fabric surface are also obtained successfully!

- 1- Extra low liquor ratio, 1:3-4 for normal active dyeing, water consumption is between 20-40L per kg fabric (from light to dark color).
- 2- MIP multi-inlet pump and "Even-flow" system ensures the dyeing liquor can be mixed average before each injection to the nozzle, circulation efficient are increased 300%.
- 3- "Even-flow" dosing system can ensure no tube and section difference.
- 4- MLH Low tension design ensures fabric are processed under minimum tension, thus reducing the crease marks, wearing, and proper dyeing to edges under open width process.
- 5- Typical processing time can be 4.5-5hours.

巨染高温高压低张力匀流染色机适用于合成纤维和天然纤维中的针织布、梭织布、非织造布的前处理、染色和后处理。

“巨染Plus”能够处理折痕，表面敏感的织物，得益于高效的匀流循环系统及低张力提升系统的完美结合，“巨染Plus”即使在缸载量达到惊人的500公斤每管的工况下，仍然保持优秀的匀染性，不存在色差和管差，同时也能达至最佳的布面效果。

- 1- 超低浴比，活性染色的浴比为1:3-4；每公斤布总耗水量为20-40L（浅色至深色）。
- 2- MIP多吸入口泵浦及特殊的匀流系统保证染液在每次进入喷嘴前都能得到最均匀的混合，从而增加三倍以上循环效率。
- 3- 匀流加料系统，杜绝管差和段差。
- 4- MHL织物提升高度的最小化设计，保证了处染过程中织物张力最小化，减少擦伤，折痕，卷边问题。
- 5- 总工艺时间可达4.5-5小时。

TECHNICAL DATA

Liquor ratio: 1:3-4
Max. Lifting speed: 500M/min.
Designer temperature: 140°C
Designed pressure: 3.5Mbar
Heating gradient: 5°C/min. from 25°C-100°C
Cooling gradient: 2°C/min. from 100°C-85°C

技术参数

浴比: 1:3-4
最高提升速度: 500M/min
最高设计温度: 140°C
压力: 3.5Mbar
升温速率: 25°C-100°C, 平均5°C每分钟
降温速率: 100°C-85°C, 平均2°C每分钟



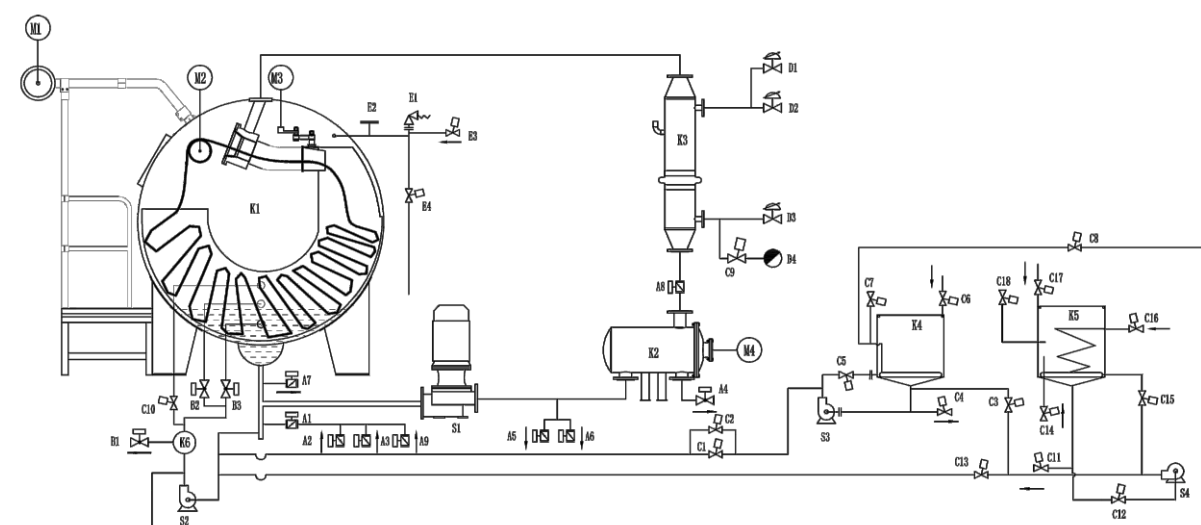
高温高压低张力匀流染色机
GIANT Plus H.T. LOW TENSION EVENFLOW DYEING MACHINE



www.texlinkmachine.com



SCHEMATIC DIAGRAM 流程图



- K1=Main Kier 主缸
- K2= Filter 过滤器
- K3= Heat Exchanger 换热器
- K4=Dosing Tank 1染料桶1
- K5=Dosing Tank 2染料桶2
- K6=Filter 循环过滤器
- S1=main pump 主泵
- S2=Master cylinder circulating pump 主缸循环泵
- S3= Barrel 1 feed pump 料桶1 注料泵
- S4= Barrel 2 feed pump 料桶2 注料泵

CHOOSE YOUR MODEL 技术选型

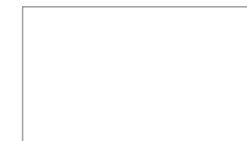
MODEL 机型	CAPACITY(KG) 载量	MAIN PUMP POWER(KW) 主泵功率	INSTALLED POWER(KW) 总功率	DIMENSIONS(MM)外形尺寸		
				Length 长	Width 宽	Height 高
GP-HT-1T500	500	11kw	21.7	4100	5600	4100
GP-HT-2T500	1000	22kw	32.7	5800	5600	4100
GP-HT-3T500	1500	30kw	41.5	7300	5600	4100
GP-HT-4T500	2000	37kw	51.5	9000	6000	4100
GP-HT-6T500	3000	30kw*2	76	12200	6000	4100

Manufacturer: TEXLINK ENGINEERING CO., LTD.

制造商: 惠州泰纶纺织机械有限公司

中国-广东省惠州市博罗县园洲镇禾山工业区
Texlink Industrial Park ,HeShan Village ,YuanZhou Town ,
BoLuo County ,HuiZhou 516123,P.R.China
Tel:86-752-6650 928 Fax:+86-752-6650 298
E-mail:sales@texlinkmachine.com

DISTRIBUTOR.
经销商



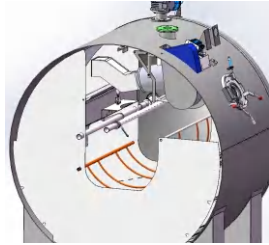


特殊布种SPECIAL FABRIC

可开幅式运行, 易卷边布亦可使用。可行双股入布
Thanks to special nozzle design, open width fabric and double ropes can be also applied smoothly.

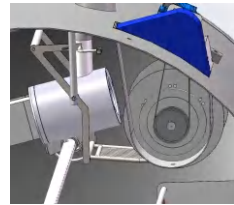
缸内清洗TANK WASHING

缸内具清洗机构, 可自动清洗缸体, 换色操作也不复杂
Automatic Tank washing system to ensure a clean machine for even color change.



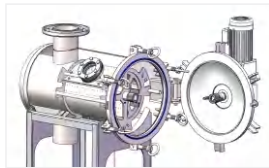
防缠车自动解缠ANTI-TANGLE

具自动侦测功能, 感应后提布轮以变频控制反转解缠, 缠车发生率极低
Automatic Tangle release is carried by inverter FOR/REV.



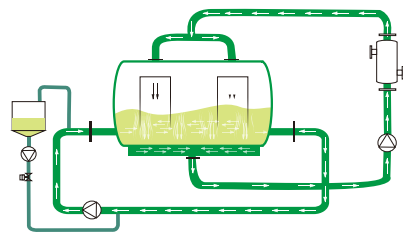
棉絮过滤器AUTO FILTER

全自动棉絮过滤清除系统, 不需人工操作
Auto filtering system.



染液横向循环CIRCULATION

纵向及横向双循环系统设计, 染液均匀度提高300%
Dual Circulation design, dyeing liquid circulation efficiency increased 300%.



MIP主泵循环MAIN PUMP

多吸入口染色主泵, 从缸底不同位置吸水并被主泵搅拌均匀再导入喷嘴, 大幅提升匀染率
Multi inlet dyeing pump can also greatly increase uniformity of dyeing liquid.



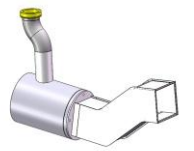
喷嘴设计NOZZLE DESIGN

根据布种可更换180MM或135MM喷嘴, 几乎适应所有布重范围
Interchangeable nozzle between 180/135mm, almost suitable for all kinds of fabric in the market.



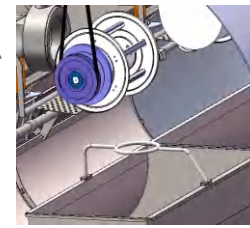
展布设计FABRIC TRANS DUCT

喷嘴与摆布器(输送管)一体, 输送管前圆后方全新设计, 布易展开
Built in Nozzle + Fabric Trans Duct, Round to Rectangular design for better extending of fabric.



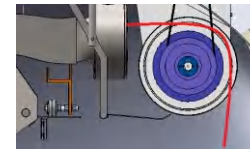
MLH提布高度LIFTING HEIGHT

提布轮设计在机器内部, 布槽上方, 具有极少的提升高度, 从而将织物张力减至最小
Built in Lifter Reel Design, Minimized Lifting height to the fabric thus lowest tension obtained for processing.



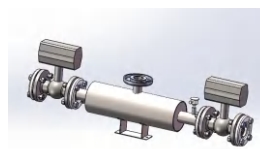
经过提布轮布的方向改变角度LIFTING ANGLE

转90度/布张力小, 摩擦小
Fabric Lifting Angle upto 90°, fabric runs extra low tension and friction.



高温排放温度HT DRAINING

智能型染缸设计, 染缸压力可依温度自动调整, 因此, 高温排放于90°C以下即可开始
Hot draining is allowed to be carried from 90°C by a HT draining system.



同步降温水洗CCR

采用CCR 降温同步水洗, 降温水用于水洗, 并支持高温排放
CCR allows rinsing by the cooling water, also Hot draining system is built in.

GP-HT



摆布后储布空间调整ADJUSTABLE CHAMBER

箱型储布空间, 可依布克重, 前后可调整储布空间, 布的排列依序, 先进先出
Fabric Chamber can be adjusted according weight of fabric to ensure fabric running smoothly.



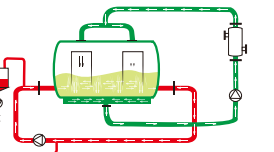
副缸数量及功能DOSING TANK

2副缸设计, 其中1桶具计量功能, 另一桶为粉体(如芒硝等)之注入功能
Wet and Dry chemical dosing tanks are considered for most convenient operation.



染料及助剂计量DOSING

智慧型计, 带缸底横向循环系统, 染料及助剂计量注入后先经过横向循环系统充分搅拌再导入喷嘴
Dosing to be carried by the Horizontal circulation ensures even liquid to be transferred to the fabric anyway.



染机设计DESIGN

复杂问题简单解决, TEXLINK在解决匀染和节能减排方向不断研发
TEXLINK design to Reduce Water, Electricity, Steam consumption for proper dyeing solution.
Continuously contribute "VALUE CREATED" service and products for textiles industry.



染机人机界面控制器CONTROLLER

与德国SEDO TREE POINT公司为长期伙伴, 合作经验丰富。
亦可搭配其他控制器 如SETEX
Standard with Sedo Tree Point controller, also Setex is available for optional.



染色控制DYEING CONTROL

染程洗水即时监控最佳化, 由感应器监测缸内液体波长确定是否已清洗干净
optical turbidity sensing system for rinsing control.



自动圈时控制AUTO CIRCLE TIME

自动圈时控制, 布槽载量, 织物长度不同情况下, 仍然保证织物通过喷嘴的次数一致, 达至匀染
Auto circle time control, speed of each nozzle can be adjusted according to length of fabric, to ensure even dyeing.



染色再现性ONE TIME RIGHT DYEING

全自动染色控制外加精准水位, 温度控制, 极其优化的整机设计, 保证染色一次中色率高, 染色再现性高。
High Performance machine combined with accuracy sensing to level and temp. both OTRD and Repeat Dyeing ratio are on higher side.

